

AUSTRALIAN WOOL INDUSTRIES SECRETARIAT INC

Unit 9, 42 - 46 Vella Drive
Sunshine West Vic 302
Australia
Tel: 03 9311 0103
Fax: 03 9311 0138

Email: awis@woolindustries.org
Web: www.woolindustries.org
ABN: 30 454 304 967
Reg No: A0041776E



AWIS WOOL MARKET REVIEW

Week Ending 17 June 2022 (Week 50)

The AWEX EMI finished 29¢ higher (+2.0%) in Australian currency and 9¢ lower (-0.9%) in US currency at sales in Sydney, Melbourne and Fremantle in Week 50.

35,572 bales were on offer nationally, compared with 31,097 bales last sale. 9.9% of the offering was passed in after 3.7% of the potential offering was withdrawn prior to sale. 32,053 bales were sold.

AWEX reports that the value of the wool sold was \$56.0 million (\$1,747 per bale), taking the season total to \$2.486 billion (\$1,607 per bale). The number of bales sold at auction this season is now 6.5% greater than in 2020/21.

Day-to-Day and Sale-to-Sale Changes in AWEX Regional Indicators (Week 50)									
Centre	Last Sale		Day-to-Day Changes (Week 50)			Sale-to-Sale Change	Closing Indicator	Sale-to-Sale Changes	
	Week	Indicator	Tuesday	Wednesday	Thursday			US ¢	Euro ¢
Eastern	49	1438	No Sale	+22	+7	+29 (+2.0%)	1467	-9	+15
Northern	49	1540	No Sale	+17	+2	+19 (+1.2%)	1559	-18	+8
Southern	49	1370	No Sale	+25	+11	+36 (+2.6%)	1406	-3	+20
Western	48	1490	No Sale	+60	+13	+73 (+4.9%)	1563	+21	+45

The market got away to a very good start on Wednesday due to a combination of demand and a week-to-week fall of 2.03¢ (-2.8%) in the US Exchange Rate that took the closing rate to 69.99¢. This was the second lowest US Exchange Rate for the season.

The greatest rises were seen in Fremantle, where the WMI moved up by 60¢ on Wednesday (after a break in sales in the previous week) and by a further 13¢ on Thursday.

The greatest overall rises on a Diameter basis occurred among the broader Merinos where gains of 5.3% and 5.0% were recorded at 20 and 21 microns.

Buyers for China were dominant, with support from buyers for Europe and India

In other countries, South African sales were in recess for another week.

Looking ahead, offerings for the coming three sales are currently expected to range from 30,810 bales to 37,461 bales and to be 12.0% less than in the same period last year. The forecast progressive difference to Week 53 is +6.3%.

Differences in AWEX MPGs	18.5 and 22.0	18.0 and 22.0	17.5 and 22.0	17.0 and 22.0	16.5 and 22.0
North	No 22.0µ MPG	No 22.0µ MPG	No 22.0µ MPG	No 22.0µ MPG	No 22.0µ MPG
South	628¢	894¢	1210¢	1421¢	1640¢

Market Indicators	Week 50	Changes From			
		Four Sales Ago Week 46	Start of the Season	Week 50 Last Year	Season Average to Week 50 Last Year
Eastern Market Indicator	1438	+11 (+0.8%)	+14 (+1.0%)	+95 (+7.1%)	+219 (+18.9%)
Western Market Indicator	No Sale	No Sale	No Sale	No Sale	No Sale

Sale-to-Sale Changes in Average AWEX Merino Micron Price Guides (MPGs)												
Micron	16.5	17.0	17.5	18.0	18.5	19.0	19.5	20.0	21.0	22.0	23.0	24.0
Since Last Sale												
Change ¢	+48	+27	+30	+37	+30	+52	+64	+73	+73	+35		
Change %	+1.6%	+1.0%	+1.2%	+1.7%	+1.5%	+2.9%	+4.0%	+5.0%	+5.3%	+2.5%		
Since Start of the Season												
Change ¢	+250	+259	+234	+148	+99	+57	+58	+94	+123	+152		
Change %	+9.1%	+10.3%	+10.0%	+7.0%	+5.1%	+3.2%	+3.6%	+6.5%	+9.2%	+12.1%		
Since Week 50 Last Year												
Change ¢	+327	+295	+270	+195	+147	+85	+83	+114	+155	+159		
Change %	+12.2%	+11.8%	+11.8%	+9.4%	+7.7%	+4.9%	+5.3%	+8.0%	+11.9%	+12.7%		

Sale-to-Sale Changes in Other Average AWEX Price Guides						
Micron	25.0	26.0	28.0	30.0	32.0	MC
Since Last Sale						
Change ¢	0	-8	0	+3	0	-7
Change %	0.0%	-1.2%	0.0%	+0.9%	0.0%	-0.7%
Since Start of the Season						
Change ¢		-127	-80	-71	-50	-37
Change %		-15.7%	-16.2%	-17.4%	-18.9%	-3.8%
Since Week 50 Last Year						
Change ¢		-49	-71	-54	-23	-11
Change %		-6.7%	-14.6%	-13.8%	-9.7%	-1.2%

MC Average Merino Cardings Price Guide

AWIS WOOL MARKET REVIEW

Week Ending 17 June 2022 (Week 50)

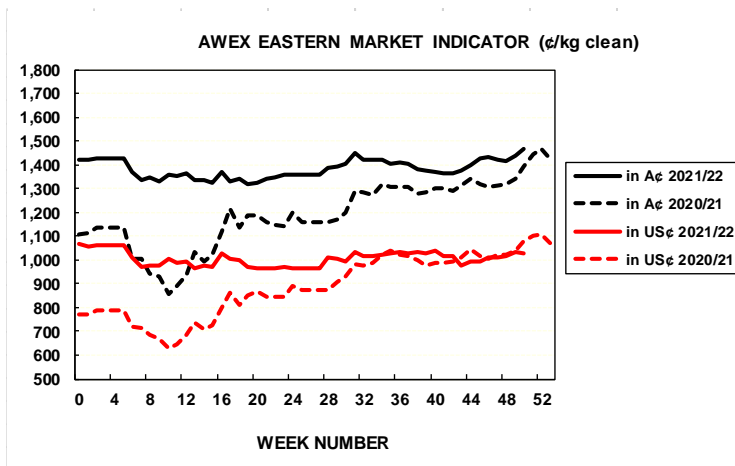
The following tables show the details of this week's sale offering; the expected offerings over the next three sales; the changes in Exchange Rates since the previous sale; and highlights from the April ABS export data.

Details of this Week's Offering and the Comparison with the Previous Sale's Offering							Progressive Changes from Last Year		
Centre	Last Sale	This Sale					All Bales		1 st Time Bales
	Offering	Offering	Passed-In	Withdrawn Before Sale	Re-Offered	Bales Sold	Bales	%	%
North	12,665	9,254	7.3%	4.1%	8.1%	8,578	+48,706	+10.8%	+9.5%
South	18,432	17,259	11.5%	4.4%	10.3%	15,277	+61,691	+7.1%	+6.7%
West		9,059	9.5%	2.0%	5.6%	8,198	+15,954	+5.0%	+4.9%
Australia	31,097	35,572	9.9%	3.7%	8.5%	32,053	+125,943	+7.7%	+7.1%

Next Sale Offerings and Year-on-Year Differences				
Centre	Week 51	Week 52	Week 52	Differences
North	11,461	10,820	9,750	-11.7%
South	19,349	19,916	21,161	-0.5%
West	No Sale	5,450	6,550	-69.8%
New Zealand				
Australia	30,810	36,186	37,461	104,457
Differences	-27.5%	+8.6%	-12.6%	-12.0%

Exchange Rates (Reserve Bank)	Last Sale	Day-to-Day Changes					Sale-to-Sale Change	Closing Value	Season Min & Max	
		Fri	Mon	Tues	Wed	Thur			Min	Max
United States	72.02	-0.81	Public	-1.55	-0.60	+0.03	-2.03 (-2.8%)	69.99	69.55	75.72
Euro	67.38	-0.42	Holiday	-0.23	-0.74	-0.44	-0.28 (-0.4%)	67.10	61.70	69.58

Country	% Share of Australia's Wool Exports by Weight of Wool Shipped			Year-on-Year % Change July to April	
	April 2022	July to April 2021/22	July to April 2020/21	By Weight	By Value
China	85.1%	81.6%	87.1%	+11.1%	+33.2%
India	3.6%	4.7%	3.4%	+65.9%	+96.2%
Italy	2.5%	4.6%	1.9%	+181.7%	+281.2%
Czech Republic	4.3%	3.9%	3.7%	+25.6%	+38.7%
Korea	1.6%	1.5%	1.6%	+11.2%	+20.5%
Egypt	0.4%	0.7%	0.3%	+191.1%	+290.2%
Thailand	0.7%	0.6%	0.4%	+83.3%	+127.3%
Germany	0.1%	0.4%	0.3%	+54.3%	+18.0%
Change all Countries				+18.6%	+44.8%



AVERAGE EMI	
This Year	1382
Last Year	1199
2019/20	1448
2018/19	1939
2017/18	1739

SEASON AVERAGES		
Region	This Year	Diff
North	1471	+206
South	1323	+166
West	1428	+192

THIS YEAR'S EMI	
This Week	1467
First Week	1420
Low (12/01)	1319
High (11/01)	1467

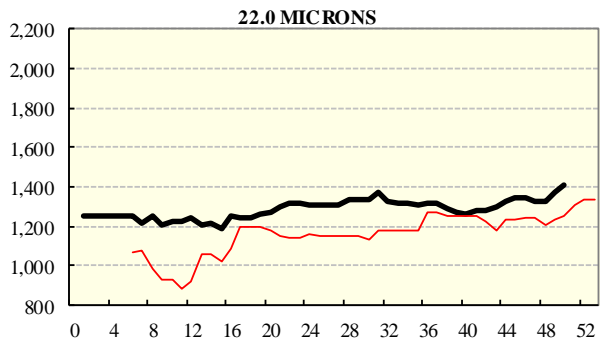
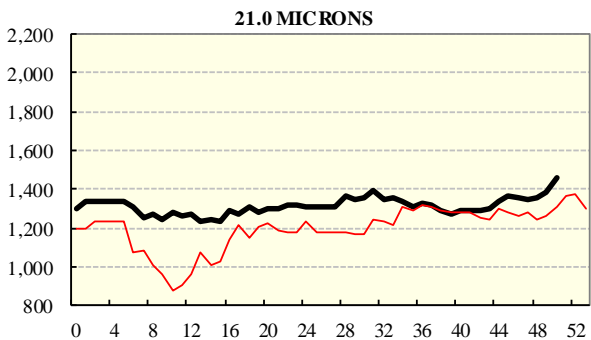
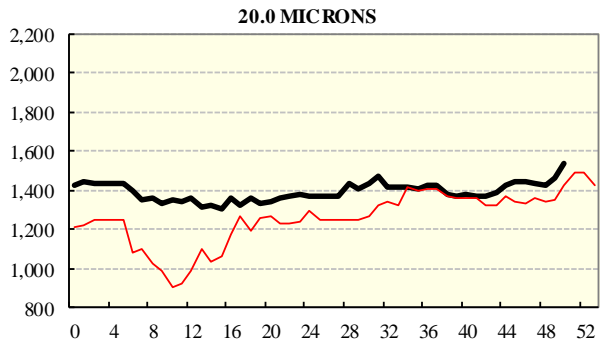
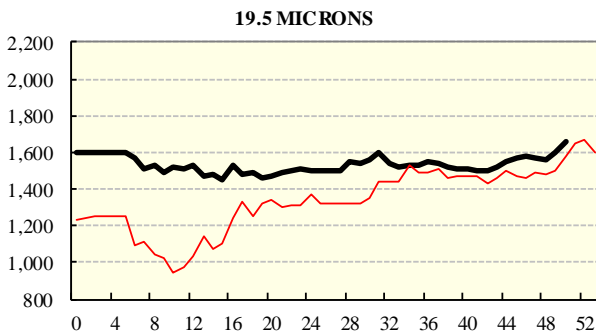
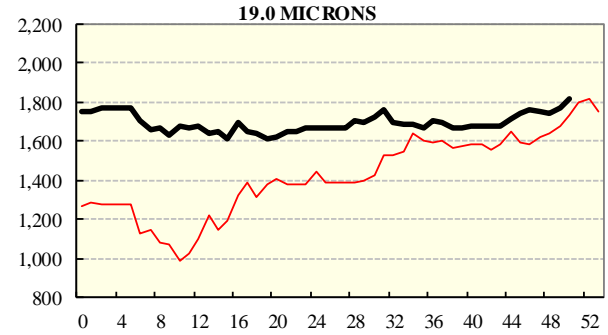
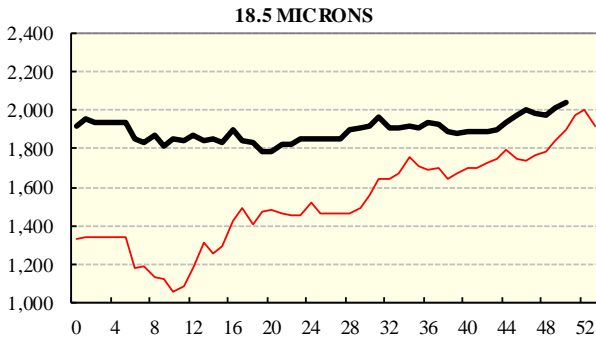
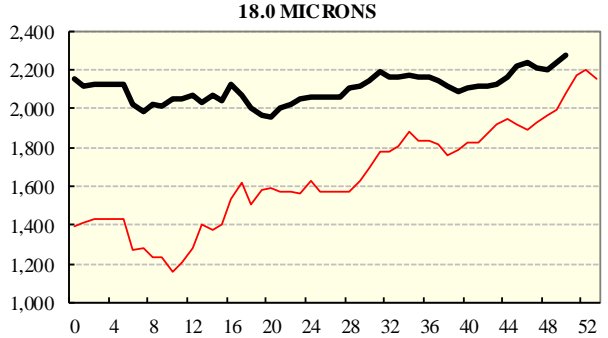
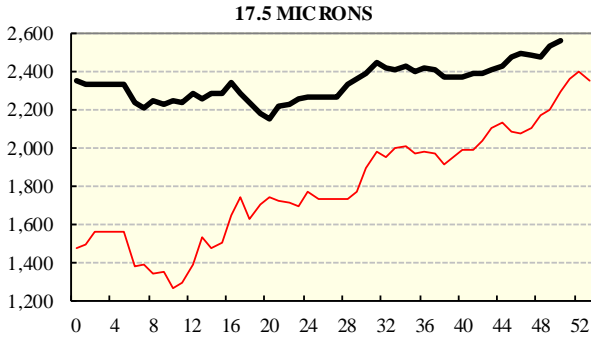
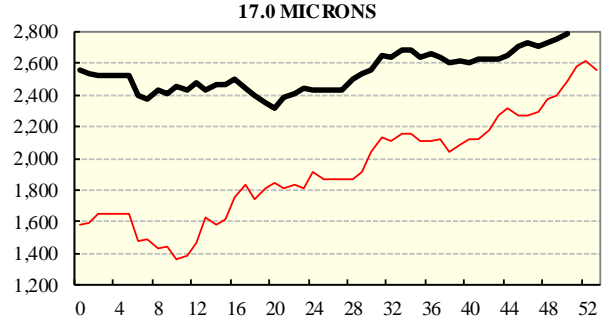
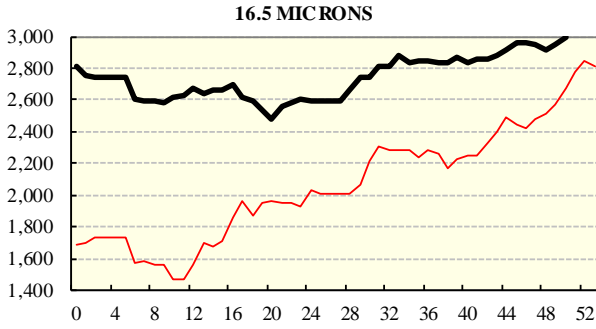
COMPARED WITH WKS 1/2		
Region	This Week	Diff
North	1559	+43
South	1406	+40
West	1563	+111

BALES OFFERED	
This Year	1,769,391
Last Year	1,643,448
Difference	+125,943
% Diff	+7.7%
FIRST OFFERED BALES	
Difference	+7.1%
% of Offering	90.7%

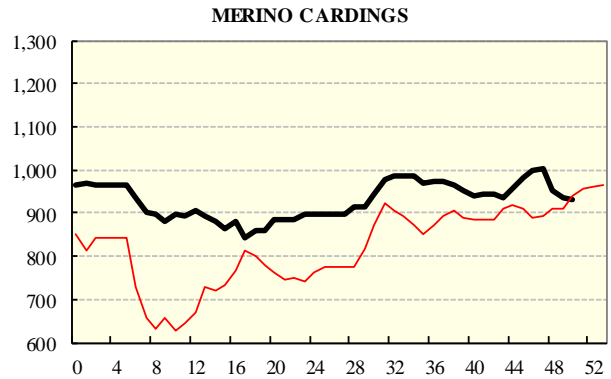
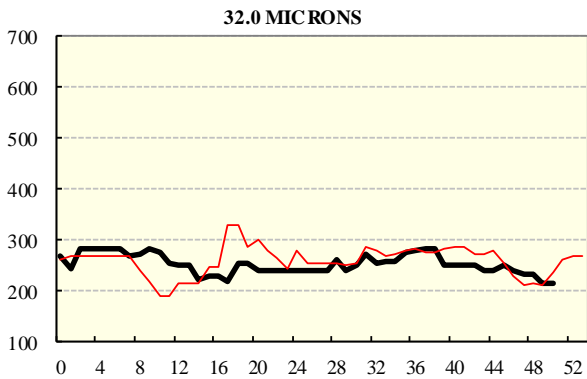
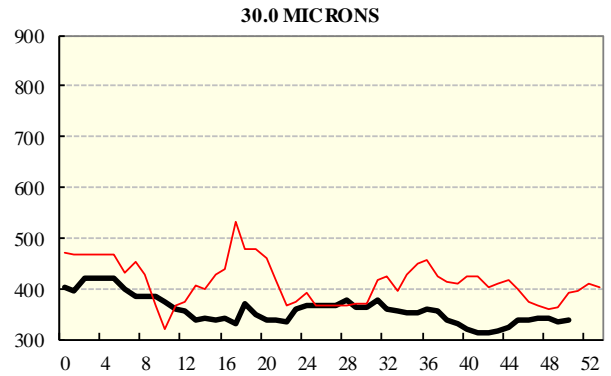
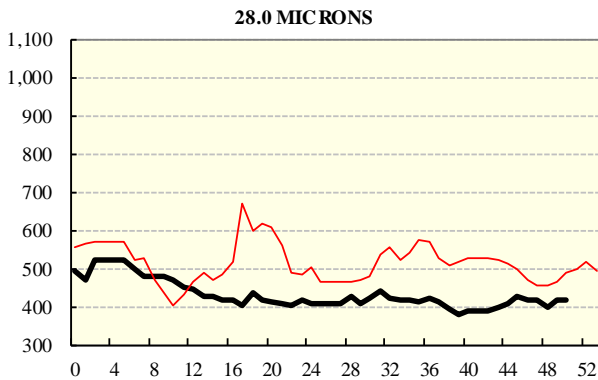
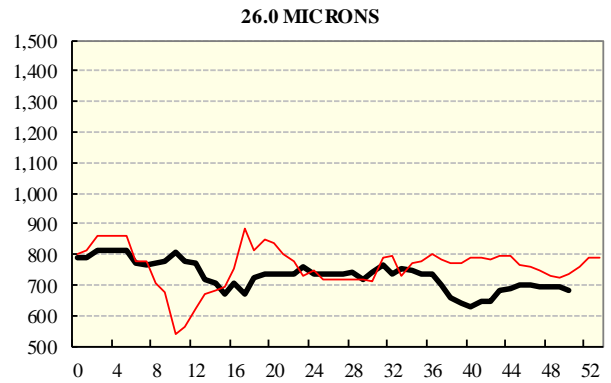
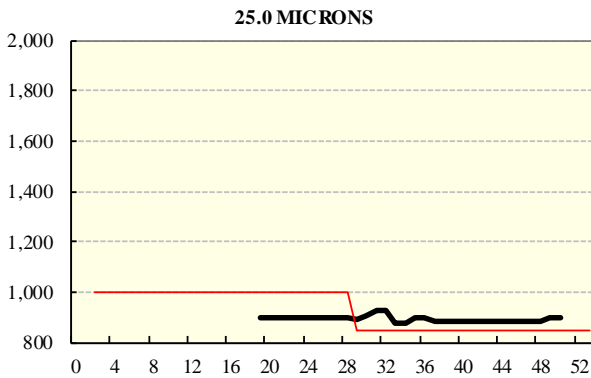
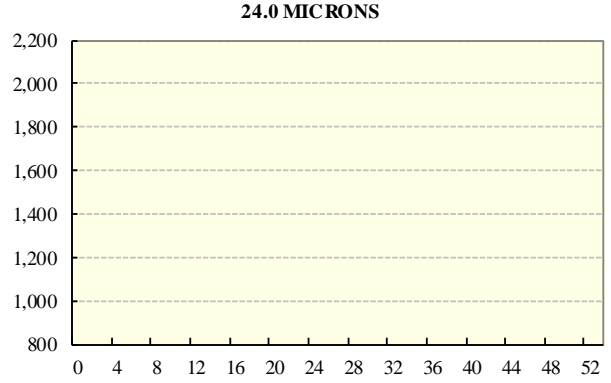
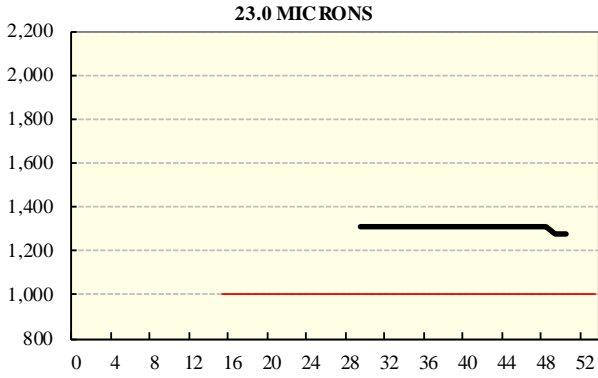
REGION BALES		
This Sale:		Diff
North	9,254	
South	17,259	
West	9,059	
Progressive Totals:		Diff
North	499,624	+10.8%
South	932,957	+7.1%
West	336,810	+5.0%

AVERAGE AWEX MICRON PRICE GUIDES

2021/22 (black graph line) and 2020/21 (red graph line)



AVERAGE AWEX MICRON PRICE GUIDES
2021/22 (black graph line) and 2020/21 (red graph line)



EASTERN MARKET INDICATOR (EMI) SINCE 1999/00 (¢/kg clean)

(In Australian, United States and European Currencies)

