

AUSTRALIAN WOOL INDUSTRIES SECRETARIAT INC

Unit 9, 42 - 46 Vella Drive
Sunshine West Vic 3020
Australia
Tel: 03 9311 0103
Fax: 03 9311 0138

Email: awis@woolindustries.org
Web: www.woolindustries.org
ABN: 30 454 304 967
Reg No: A0041776E



AWIS WOOL MARKET REVIEW

Week Ending 20 May 2022 (Week 46)

The AWEX EMI finished 7¢ higher (+0.5%) in Australian currency and 17¢ higher (+1.7%) in US currency at sales in Sydney, Melbourne and Fremantle in Week 46.

43,662 bales were on offer nationally, compared with 41,861 bales last sale. 10.1% of the offering was passed in after 4.2% of the potential offering was withdrawn prior to sale. 39,237 bales were sold.

AWEX reports that the value of the wool sold was \$64.9 million (\$1,654 per bale), taking the season total to \$2.270 billion (\$1,600 per bale). The number of bales sold at auction this season is now 8.5% greater than in 2020/21.

Centre	Last Sale		Day-to-Day Changes (Week 46)			Sale-to-Sale Change	Closing Indicator	Sale-to-Sale Changes	
	Week	Indicator	Tuesday	Wednesday	Thursday			US ¢	Euro ¢
Eastern	45	1427	+3	+4	No Sale	+7 (+0.5%)	1434	+17	+16
Northern	45	1521	+9	+6	No Sale	+15 (+1.0%)	1536	+22	+22
Southern	45	1365	-1	+2	No Sale	+1 (+0.1%)	1366	+12	+12
Western	45	1502	+8	+5	No Sale	+13 (+0.9%)	1515	+21	+20

There were some rises and falls in the individual AWEX Micron Price Guides over both days, but not enough to stop the EMI from continuing the upward movement seen since the week prior to Easter. This time, the upward movement was in both Australian and US currencies after the earlier falls in US currency. There were gains in the Micron Price Guides up to 19 microns after which there were small falls. Crossbred prices eased

The US Exchange Rate finished 0.79¢ (1.1%) higher to close at 70.34¢ on Wednesday.

Buyers for China were dominant, with support from buyers for India and Europe.

Looking ahead, offerings for the coming three sales are expected to range from 30,165 bales (when only Sydney and Melbourne are selling) to 46,212 bales and to be 6.9% less than in the same period last year. The forecast progressive difference to Week 49 is +8.5%.

In other countries, the South African Cape Wools Indicator was down by 1.8% since last week against a 0.8% appreciation of the Rand against the US Dollar and a 1.3% appreciation against the Euro.

Differences in AWEX MPGs	18.5 and 22.0	18.0 and 22.0	17.5 and 22.0	17.0 and 22.0	16.5 and 22.0
North	No 22.0µ MPG	No 22.0µ MPG	No 22.0µ MPG	No 22.0µ MPG	No 22.0µ MPG
South	651¢	920¢	1163¢	1395¢	1647¢

Market Indicators	Week 46	Changes From			
		Four Sales Ago Week 41	Start of the Season	Week 46 Last Year	Season Average to Week 46 Last Year
Eastern Market Indicator	1434	+67 (+4.9%)	+10 (+0.7%)	+128 (+9.8%)	+211 (+18.1%)
Western Market Indicator	1515	+98 (+6.9%)	+63 (+4.3%)	+165 (+12.2%)	+207 (+17.1%)

Micron	16.5	17.0	17.5	18.0	18.5	19.0	19.5	20.0	21.0	22.0	23.0	24.0
Since Last Sale												
Change ¢	-1	+17	+18	+21	+28	+14	+6	+2	-5	-1		
Change %	0.0%	+0.6%	+0.7%	+0.9%	+1.4%	+0.8%	+0.4%	+0.1%	-0.4%	-0.1%		
Since Start of the Season												
Change ¢	+213	+199	+161	+113	+59	-5	-21	+1	+21	+91		
Change %	+7.8%	+7.9%	+6.9%	+5.3%	+3.0%	-0.3%	-1.3%	+0.1%	+1.6%	+7.2%		
Since Week 46 Last Year												
Change ¢	+537	+460	+419	+346	+267	+172	+119	+111	+94	+100		
Change %	+22.2%	+20.3%	+20.2%	+18.3%	+15.4%	+10.8%	+8.1%	+8.3%	+7.4%	+8.0%		

Micron	25.0	26.0	28.0	30.0	32.0	MC	
Since Last Sale							
Change ¢			0	-7	0	-10	+19
Change %			0.0%	-1.6%	0.0%	-4.0%	+1.9%
Since Start of the Season							
Change ¢			-110	-76	-69	-25	+34
Change %			-13.6%	-15.4%	-17.0%	-9.4%	+3.5%
Since Week 46 Last Year							
Change ¢			-57	-51	-34	+9	+110
Change %			-7.5%	-10.9%	-9.1%	+3.9%	+12.4%

MC Average Merino Cardings Price Guide

AWIS WOOL MARKET REVIEW

Week Ending 20 May 2022 (Week 46)

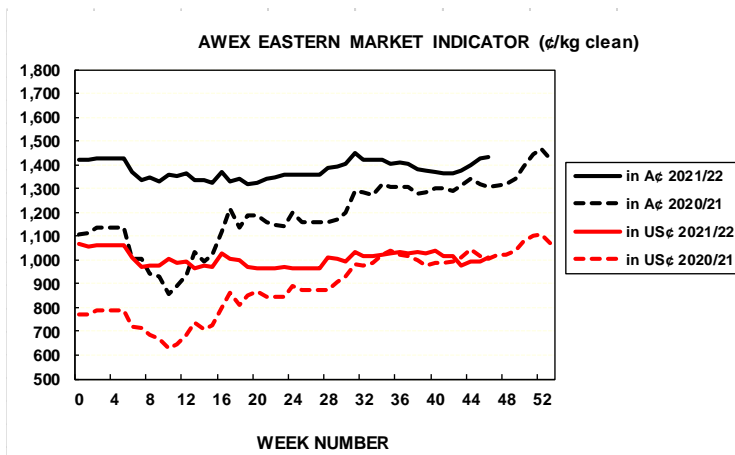
The following tables show the details of this week's sale offering; the expected offerings over the next three sales; the changes in Exchange Rates since the previous sale; and highlights from the March ABS export data.

Details of this Week's Offering and the Comparison with the Previous Sale's Offering							Progressive Changes from Last Year		
Centre	Last Sale	This Sale					All Bales		1 st Time Bales
	Offering	Offering	Passed-In	Withdrawn Before Sale	Re-Offered	Bales Sold	Bales	%	%
North	9,152	8,901	7.8%	1.3%	5.7%	8,204	+52,988	+13.1%	+11.7%
South	23,097	25,819	11.7%	5.9%	7.7%	22,806	+74,136	+9.5%	+9.2%
West	9,612	8,942	8.0%	2.0%	10.8%	8,227	+13,180	+4.4%	+3.9%
Australia	41,861	43,662	10.1%	4.2%	7.9%	39,237	+139,896	+9.4%	+8.9%

Next Sale Offerings and Year-on-Year Differences				
Centre	Week 47	Week 48	Week 49	Differences
North	13,062	9,652	9,650	-7.2%
South	25,350	21,961	20,515	-1.7%
West	7,800	7,760	No Sale	-24.3%
New Zealand				
Australia	46,212	39,373	30,165	115,750
Differences	+10.4%	-10.4%	-21.8%	-6.9%

Exchange Rates (Reserve Bank)	Last Sale	Day-to-Day Changes					Sale-to-Sale Change	Closing Value	Season Min & Max	
		Fri	Mon	Tues	Wed	Thur			Min	Max
United States	69.55	-0.57	-0.09	+1.18	+0.27	No	+0.79 (+1.1%)	70.34	69.55	75.72
Euro	65.95	+0.41	-0.13	+0.84	-0.32	Sale	+0.80 (+1.2%)	66.75	61.70	69.58

Country	% Share of Australia's Wool Exports by Weight of Wool Shipped			Year-on-Year % Change July to March	
	March 2022	July to March 2021/22	July to March 2020/21	By Weight	By Value
China	82.5%	81.2%	86.8%	+13.9%	+39.0%
Italy	4.4%	4.8%	2.0%	+186.9%	+290.4%
India	4.8%	4.8%	3.3%	+79.4%	+112.4%
Czech Republic	3.3%	3.9%	4.0%	+18.1%	+31.0%
Korea	1.3%	1.5%	2.0%	+15.1%	+27.0%
Egypt	0.4%	0.7%	0.3%	+211.3%	+324.7%
Thailand	0.9%	0.6%	0.4%	+90.1%	+146.2%
Germany	0.6%	0.5%	0.3%	+85.8%	+37.2%
Change all Countries				+21.8%	+51.3%



AVERAGE EMI	
This Year	1376
Last Year	1199
2019/20	1448
2018/19	1939
2017/18	1739

SEASON AVERAGES		
Region	This Year	Diff
North	1464	+200
South	1318	+161
West	1420	+185

THIS YEAR'S EMI	
This Week	1434
First Week	1420
Low (12/01)	1319
High (13/01)	1449

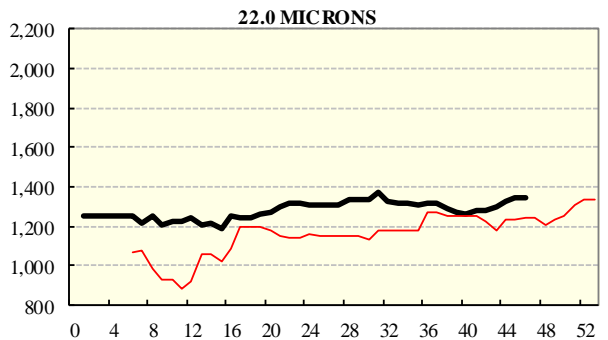
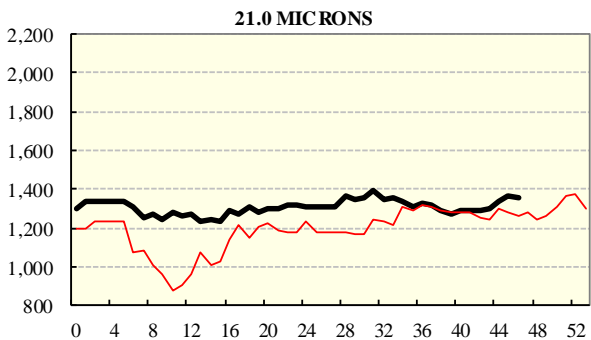
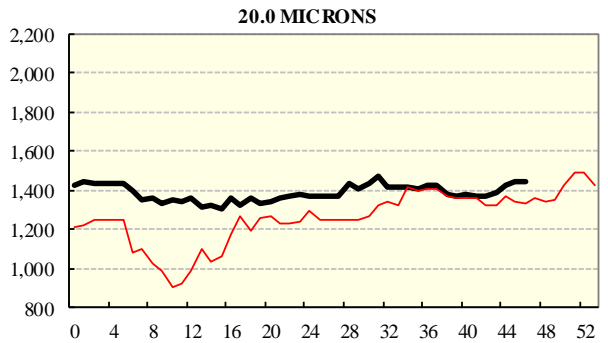
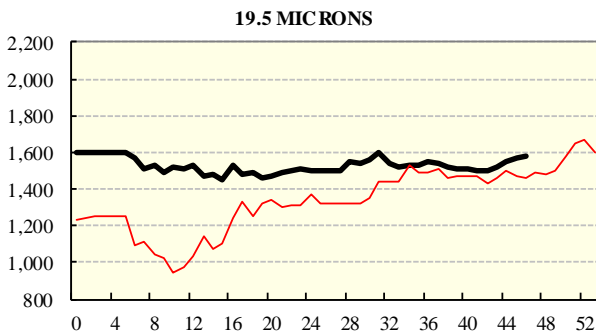
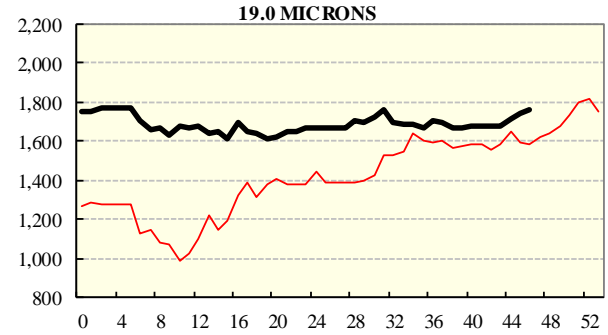
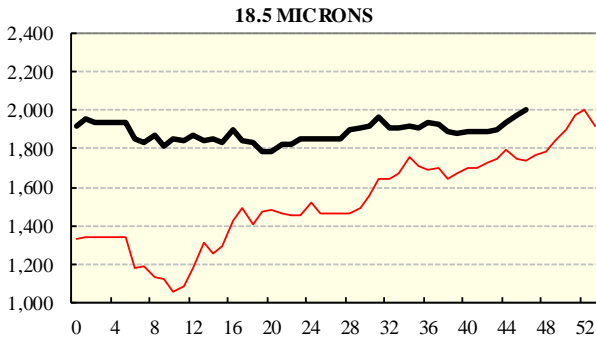
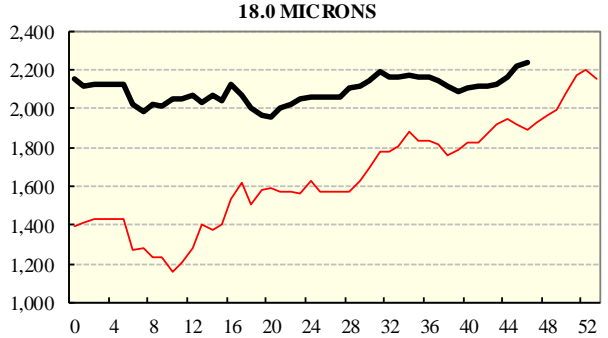
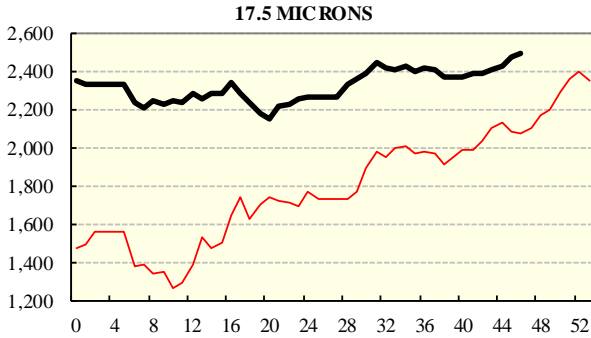
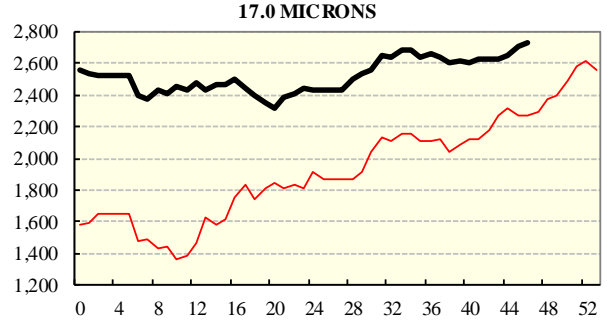
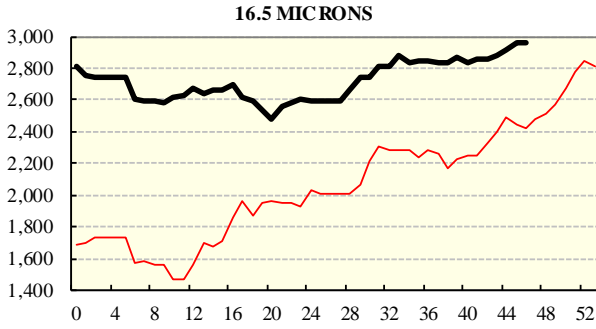
COMPARED WITH WKS 1/2		
Region	This Week	Diff
North	1536	+20
South	1366	0
West	1515	+63

BALES OFFERED	
This Year	1,622,669
Last Year	1,482,773
Difference	+139,896
% Diff	+9.4%
FIRST OFFERED BALES	
Difference	+8.9%
% of Offering	90.9%

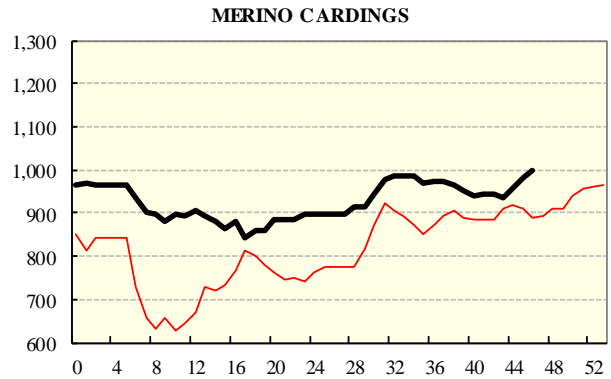
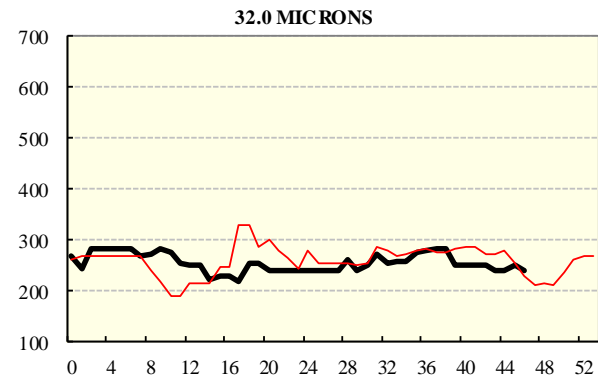
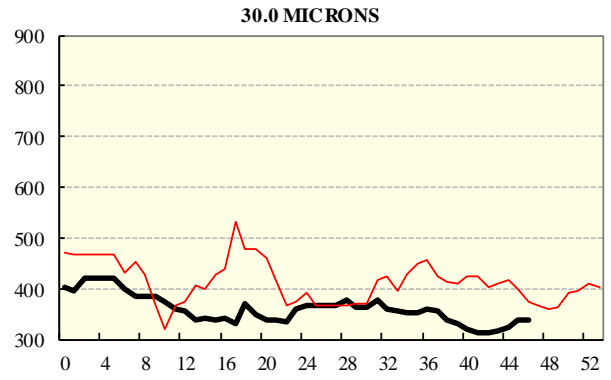
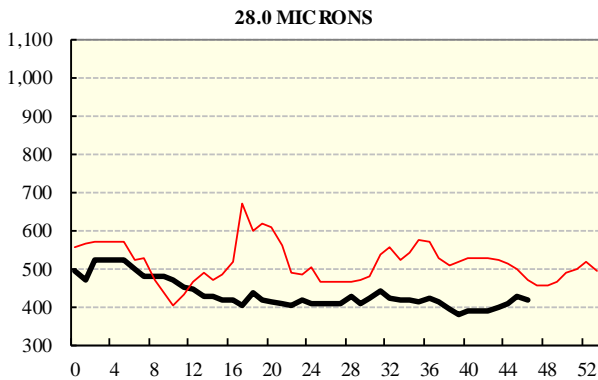
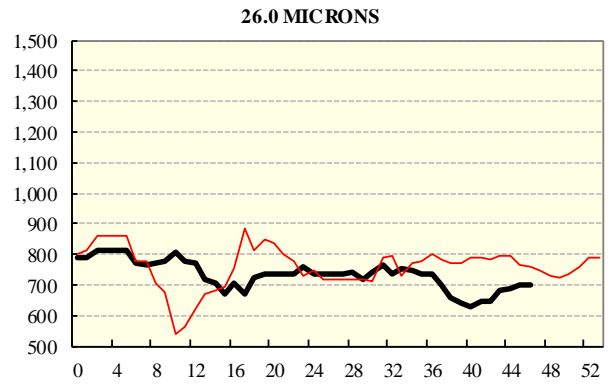
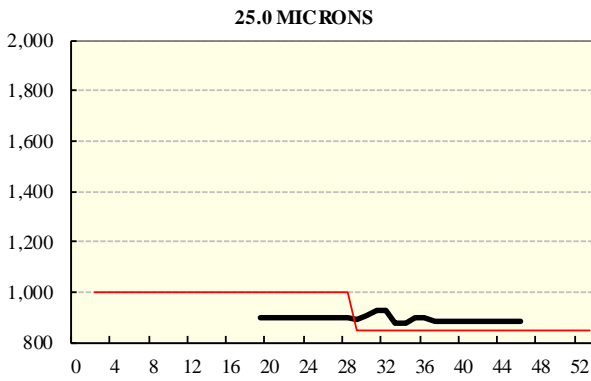
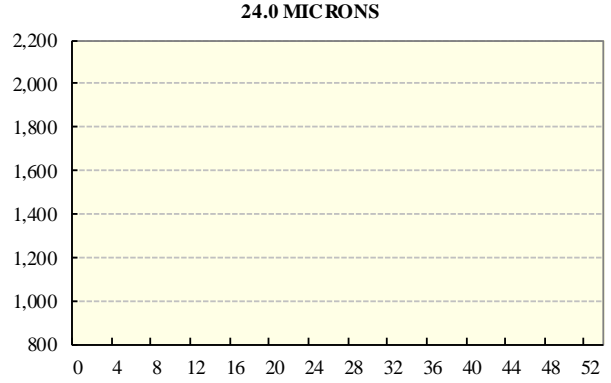
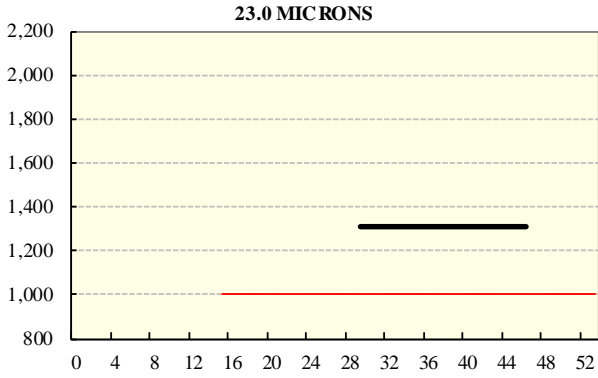
REGION BALES		
Region	This Week	Diff
North	8,901	
South	25,819	
West	8,942	
Progressive Totals:		Diff
North	456,344	+13.1%
South	852,847	+9.5%
West	313,478	+4.4%

AVERAGE AWEX MICRON PRICE GUIDES

2021/22 (black graph line) and 2020/21 (red graph line)



AVERAGE AWEX MICRON PRICE GUIDES
2021/22 (black graph line) and 2020/21 (red graph line)



EASTERN MARKET INDICATOR (EMI) SINCE 1999/00 (¢/kg clean)

(In Australian, United States and European Currencies)

