

# AUSTRALIAN WOOL INDUSTRIES SECRETARIAT INC

Unit 9, 42 - 46 Vella Drive  
Sunshine West Vic 3020  
Australia  
Tel: 03 9311 0103  
Fax: 03 9311 0138

Email: awis@woolindustries.org  
Web: www.woolindustries.org  
ABN: 30 454 304 967  
Reg No: A0041776E



## AWIS WOOL MARKET REVIEW

Week Ending 29 April 2022 (Week 43)

The AWEX EMI finished 10¢ higher (+0.7%) in Australian currency and 42¢ lower (-4.1%) in US currency when sales resumed in Week 43 after the Easter Break.

48,760 bales were on offer nationally, compared with 43,588 bales in the last sale (Week 41). 10.7% of the offering was passed in after 4.3% of the potential offering was withdrawn prior to sale. 43,550 bales were sold.

AWEX reports that the value of the wool sold was \$67.2 million (\$1,543 per bale), taking the season total to \$2.084 billion (\$1,600 per bale). The number of bales sold at auction this season is now 10.6% greater than in 2020/21.

Day-to-Day and Sale-to-Sale Changes in AWEX Regional Indicators (Week 43)

Centre	Last Sale		Day-to-Day Changes (Week 43)			Sale-to-Sale Change	Closing Indicator	Sale-to-Sale Changes	
	Week	Indicator	Tuesday	Wednesday	Thursday			US ¢	Euro ¢
Eastern	41	1367	No Sale	+2	+8	+10 (+0.7%)	1377	-42	-10
Northern	41	1457	No Sale	+4	+5	+9 (+0.6%)	1466	-46	-11
Southern	41	1307	No Sale	+1	+9	+10 (+0.8%)	1317	-39	-9
Western	41	1417	No Sale	+3	+19	+22 (+1.6%)	1439	-35	-3

Sales resumed on a positive note, although assisted by the sharp fall in the US Exchange Rate during Week 43 that lead to price gains across all micron ranges. The gains were most noticeable on Thursday; and also among the fine and medium crossbred types.

The US Exchange Rate fell by 3.55¢ (-4.8%) during the week to close at 70.96¢ on Thursday, compared with closing rates that ranged from 74.5¢ to 75.7¢ in the four weeks prior to Easter.

Buyers for China maintained their dominance.

Looking ahead, offerings for the coming three sales are expected to range from 40,347 bales to 42,874 bales and to be 14.0% less than in the same period last year. The forecast progressive difference to Week 46 is +9.4%.

The Wool Production Forecasting Committee met during the week. The 2021/22 Forecast was revised to 314 mkg from the current value of 318 mkg; and the first forecast for 2022/23 was set at 321 mkg.

Differences in AWEX MPGs	18.5 and 22.0	18.0 and 22.0	17.5 and 22.0	17.0 and 22.0	16.5 and 22.0
North	No 22.0µ MPG	No 22.0µ MPG	No 22.0µ MPG	No 22.0µ MPG	No 22.0µ MPG
South	617¢	856¢	1141¢	1331¢	1636¢

Market Indicators	Week 43	Changes From			
		Four Sales Ago Week 38	Start of the Season	Week 43 Last Year	Season Average to Week 43 Last Year
Eastern Market Indicator	1377	-7 (-0.5%)	-47 (-3.3%)	+65 (+5.0%)	+220 (+19.1%)
Western Market Indicator	1439	+15 (+1.1%)	-13 (-0.9%)	+110 (+8.3%)	+213 (+17.7%)

Sale-to-Sale Changes in Average AWEX Merino Micron Price Guides (MPGs)

Micron	16.5	17.0	17.5	18.0	18.5	19.0	19.5	20.0	21.0	22.0	23.0	24.0
Since Last Sale												
Change ¢	+13	+2	+12	+7	+15	+11	+16	+17	+14	+24		
Change %	+0.5%	+0.1%	+0.5%	+0.3%	+0.8%	+0.7%	+1.1%	+1.2%	+1.1%	+1.9%		
Since Start of the Season												
Change ¢	+128	+102	+75	+1	-45	-109	-81	-54	-37	+45		
Change %	+4.7%	+4.0%	+3.2%	+0.0%	-2.3%	-6.2%	-5.1%	-3.7%	-2.8%	+3.6%		
Since Week 43 Last Year												
Change ¢	+472	+359	+302	+211	+152	+69	+59	+68	+57	+122		
Change %	+19.6%	+15.8%	+14.4%	+11.0%	+8.7%	+4.4%	+4.0%	+5.2%	+4.6%	+10.3%		

Sale-to-Sale Changes in Other Average AWEX Price Guides

Micron	25.0	26.0	28.0	30.0	32.0	MC
Since Last Sale						
Change ¢			+38	+12	+5	-7
Change %			+5.9%	+3.1%	+1.6%	-0.7%
Since Start of the Season						
Change ¢			-130	-95	-91	-25
Change %			-16.0%	-19.2%	-22.4%	-9.4%
Since Week 43 Last Year						
Change ¢			-116	-122	-94	-33
Change %			-14.6%	-23.4%	-22.9%	-12.1%

MC Average Merino Cardings Price Guide

## AWIS WOOL MARKET REVIEW

Week Ending 29 April 2022 (Week 43)

The following tables show the details of this week's sale offering; the expected offerings over the next three sales; the changes in Exchange Rates since the previous sale; and highlights from the February ABS export data.

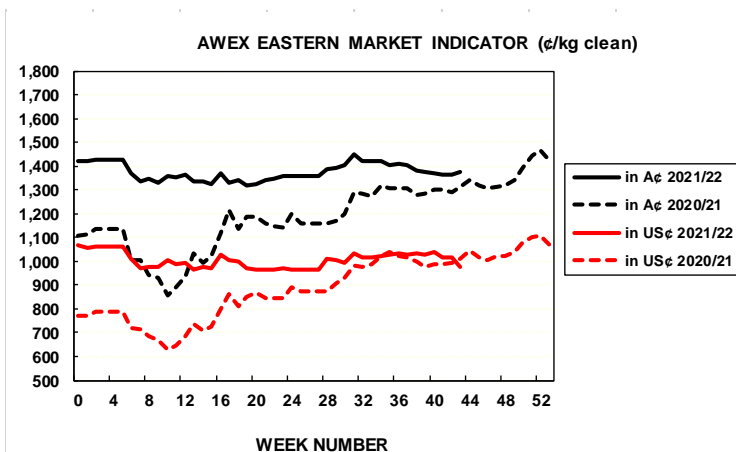
Details of this Week's Offering and the Comparison with the Previous Sale's Offering						
Centre	Last Sale	This Sale				
	Offering	Offering	Passed-In	Withdrawn Before Sale	Re- Offered	Bales Sold
North	12,550	13,558	7.8%	3.1%	5.2%	12,499
South	23,147	25,142	9.9%	3.5%	7.1%	22,641
West	7,891	10,060	16.4%	7.9%	12.3%	8,410
<b>Australia</b>	<b>43,588</b>	<b>48,760</b>	<b>10.7%</b>	<b>4.3%</b>	<b>7.6%</b>	<b>43,550</b>

Progressive Changes from Last Year		
All Bales		1 <sup>st</sup> Time Bales
Bales	%	%
+64,560	+17.7%	+16.4%
+78,884	+11.2%	+10.8%
+15,959	+5.9%	+5.7%
<b>+158,995</b>	<b>+11.9%</b>	<b>+11.3%</b>

Next Sale Offerings and Year-on-Year Differences				
Centre	Week 44	Week 45	Week 46	Differences
North	9,523	11,400	10,470	-19.9%
South	23,555	22,785	21,577	-10.4%
West	8,215	8,489	8,300	-16.0%
<b>New Zealand</b>				
<b>Australia</b>	<b>41,293</b>	<b>42,874</b>	<b>40,347</b>	<b>124,514</b>
<b>Differences</b>	<b>-13.0%</b>	<b>-9.8%</b>	<b>-18.9%</b>	<b>-14.0%</b>

Exchange Rates (Reserve Bank)	Last Sale	Day-to-Day Changes					Sale-to-Sale Change	Closing Value	Season Min & Max	
		Fri	Mon	Tues	Wed	Thur			Min	Max
United States	74.51	-1.16	Public	-1.15	-0.41	-0.83	-3.55 (-4.8%)	70.96	70.82	75.72
Euro	68.72	-1.10	Holiday	-0.34	+0.12	+0.10	-1.22 (-1.8%)	67.50	61.70	69.58

Country	% Share of Australia's Wool Exports by Weight of Wool Shipped			Year-on-Year % Change July to February	
	February 2022	July to February 2021/22	July to February 2020/21	By Weight	By Value
China	81.1%	80.9%	87.1%	+19.3%	+49.2%
Italy	4.5%	4.9%	2.0%	+214.0%	+345.2%
India	6.0%	4.8%	3.2%	+94.5%	+132.3%
Czech Republic	3.9%	4.1%	3.6%	+45.0%	+63.4%
Korea	1.5%	1.6%	1.7%	+16.5%	+28.3%
Egypt	0.9%	0.8%	0.3%	+265.9%	+418.0%
Thailand	0.5%	0.6%	0.4%	+65.8%	+111.8%
Germany	0.3%	0.4%	0.4%	+63.1%	+16.9%
<b>Change all Countries</b>				<b>+28.5%</b>	<b>+62.8%</b>



AVERAGE EMI	
This Year	1372
Last Year	1199
2019/20	1448
2018/19	1939
2017/18	1739

SEASON AVERAGES		
Region	This Year	Diff
North	1460	+195
South	1315	+158
West	1414	+178

THIS YEAR'S EMI	
This Week	1377
First Week	1420
Low (12/01)	1319
High (13/01)	1449

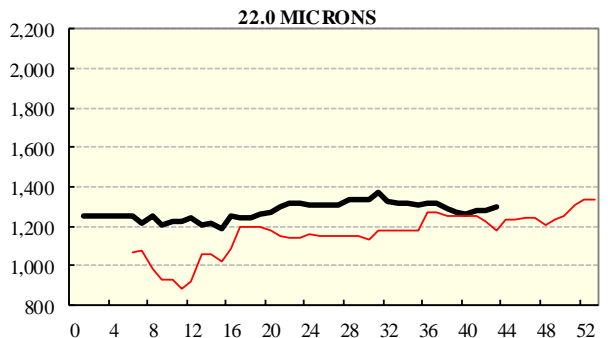
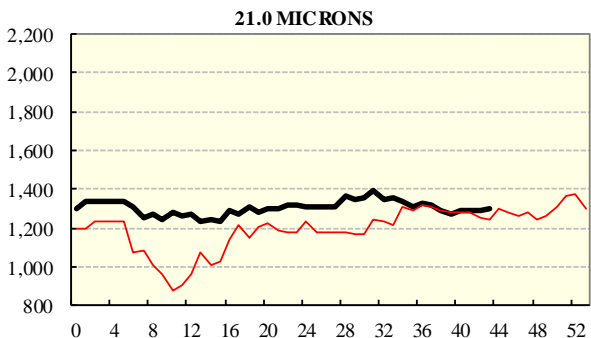
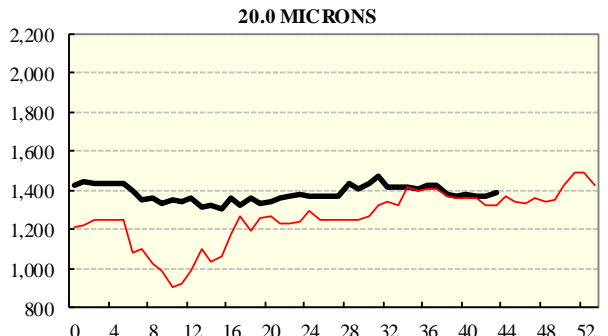
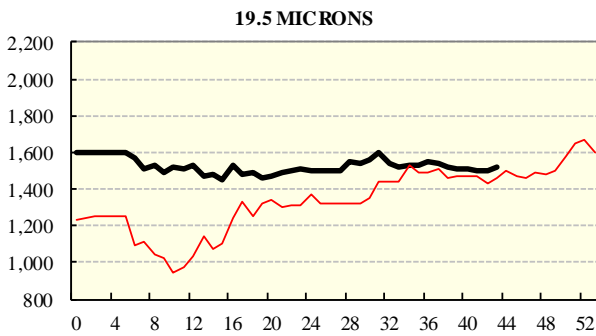
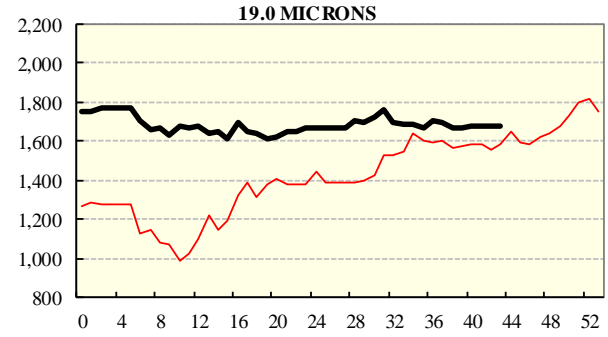
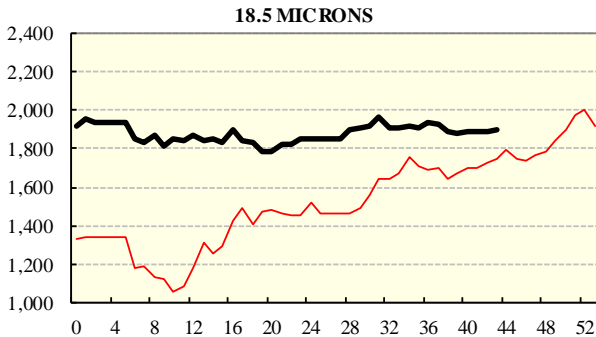
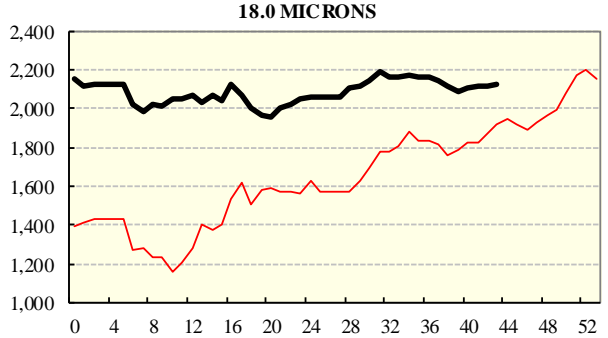
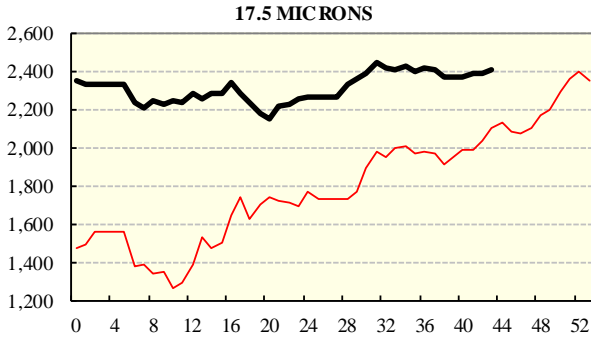
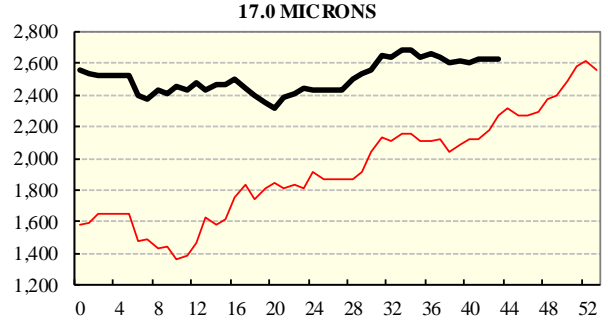
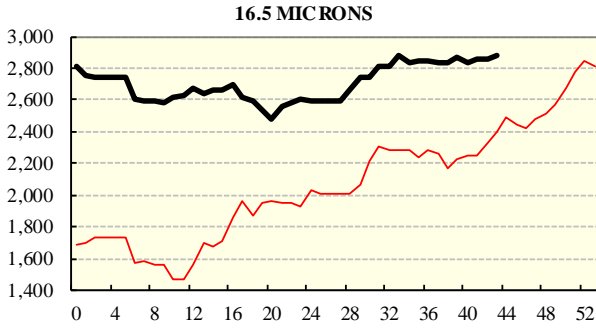
COMPARED WITH WKS 1/2		
Region	This Week	Diff
North	1466	-50
South	1317	-49
West	1439	-13

BALES OFFERED	
This Year	1,496,993
Last Year	1,337,998
Difference	+158,995
% Diff	+11.9%
FIRST OFFERED BALES	
Difference	+11.3%
% of Offering	90.9%

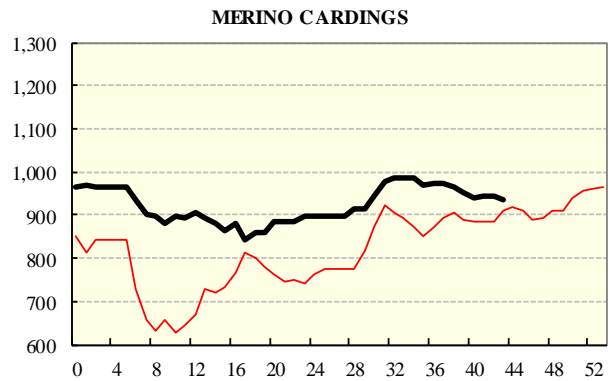
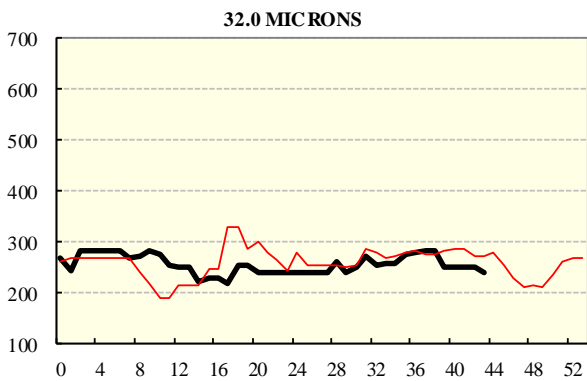
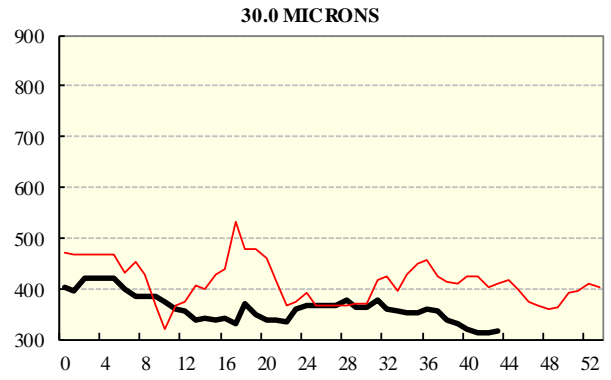
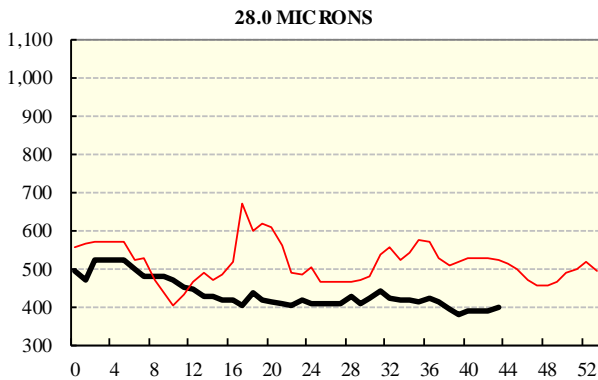
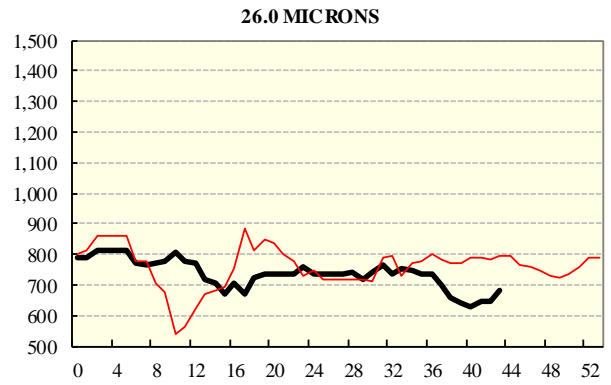
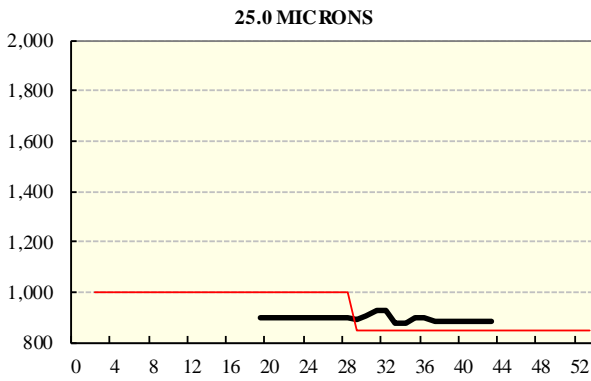
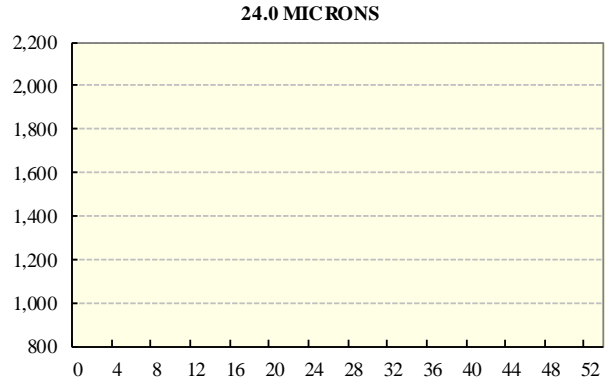
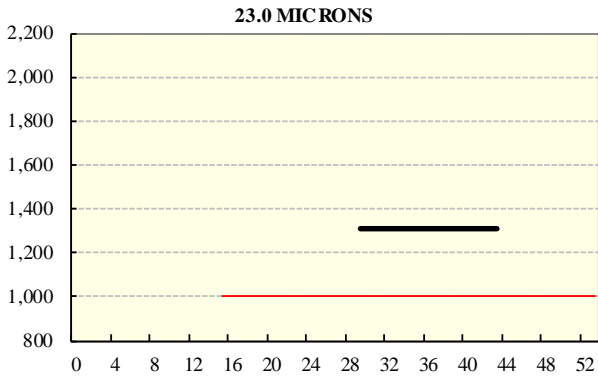
REGION BALES		
This Sale:		
North	13,558	
South	25,142	
West	10,060	
Progressive Totals:		
North	428,729	+17.7%
South	781,791	+11.2%
West	286,473	+5.9%

## AVERAGE AWEX MICRON PRICE GUIDES

2021/22 ( black graph line) and 2020/21 ( red graph line)



**AVERAGE AWEX MICRON PRICE GUIDES**  
2021/22 ( black graph line) and 2020/21 (red graph line)



### EASTERN MARKET INDICATOR (EMI) SINCE 1999/00 (¢/kg clean)

(In Australian, United States and European Currencies)

