

# AUSTRALIAN WOOL INDUSTRIES SECRETARIAT INC

Unit 9, 42 - 46 Vella Drive  
Sunshine West Vic 302  
Australia  
Tel: 03 9311 0103  
Fax: 03 9311 0138

Email: awis@woolindustries.org  
Web: www.woolindustries.org  
ABN: 30 454 304 967  
Reg No: A0041776E



## AWIS WOOL MARKET REVIEW

Week Ending 4 February 2022 (Week 31)

The AWEX EMI finished 42¢ higher (+3.0%) in Australian currency and 36¢ higher (+3.6%) in US currency at sales in Sydney, Melbourne and Fremantle in Week 31.

40,603 bales were on offer nationally, compared with 44,098 bales last sale. 6.8% of the offering was passed in after 2.7% of the potential offering was withdrawn prior to sale. 37,848 bales were sold.

AWEX reports that the value of the wool sold was \$62.5 million (\$1,651 per bale), taking the season total to \$1.365 billion (\$1,607 per bale). The number of bales sold at auction this season is now 15.2% greater than in 2020/21.

Day-to-Day and Sale-to-Sale Changes in AWEX Regional Indicators (Week 31)									
Centre	Last Sale		Day-to-Day Changes (Week 31)			Sale-to-Sale Change	Closing Indicator	Sale-to-Sale Changes	
	Week	Indicator	Tuesday	Wednesday	Thursday			US ¢	Euro ¢
Eastern	30	1407	No Sale	+26	+16	+42 (+3.0%)	1449	+36	+25
Northern	30	1501	No Sale	+27	+15	+42 (+2.8%)	1543	+36	+26
Southern	30	1345	No Sale	+24	+18	+42 (+3.1%)	1387	+35	+25
Western	30	1455	No Sale	+36	+1	+37 (+2.5%)	1492	+32	+22

The good start to the second half of the season continued this week, with good gains across all micron ranges on Wednesday that continued through to Thursday, but at slightly lesser levels. The week-to-week average gains were in the order of 2.5% to 3.0% across the Merinos; and ranged from 3.5% to 9.2% among the crossbreds.

The EMI has risen by 91¢ (6.7%) to 1449¢ since sales closed for the mid-season break.

The US Exchange Rate recovered some of last week's fall of 1.56¢ to finish 0.38¢ (0.5%) higher before closing at 71.20¢.

Buyers for China were dominant, with support from buyers for India and Europe.

Looking ahead, offerings for the coming three sales are expected to range from 40,760 bales to 48,274 bales and to be 4.4% less than in the same period last year. The forecast progressive difference to Week 34 is 13.9%.

In other countries, the South African Cape Wools Indicator was up by 7.4% since last week against a 0.3% depreciation of the Rand against the US Dollar and a 0.2% depreciation against the Euro.

Differences in AWEX MPGs	18.5 and 22.0	18.0 and 22.0	17.5 and 22.0	17.0 and 22.0	16.5 and 22.0
North	No 22.0µ MPG	No 22.0µ MPG	No 22.0µ MPG	No 22.0µ MPG	No 22.0µ MPG
South	588¢	820¢	1096¢	1286¢	1439¢

Market Indicators	Week 31	Changes From			
		Four Sales Ago Week 24	Start of the Season	Week 31 Last Year	Season Average to Week 31 Last Year
Eastern Market Indicator	1449	+91 (+6.7%)	+25 (+1.8%)	+158 (+12.2%)	+274 (+25.2%)
Western Market Indicator	1492	+84 (+6.0%)	+40 (+2.8%)	+200 (+15.5%)	+267 (+23.5%)

Sale-to-Sale Changes in Average AWEX Merino Micron Price Guides (MPGs)												
Micron	16.5	17.0	17.5	18.0	18.5	19.0	19.5	20.0	21.0	22.0	23.0	24.0
Since Last Sale												
Change ¢	+73	+83	+57	+50	+48	+35	+42	+36	+39	+37		
Change %	+2.7%	+3.2%	+2.4%	+2.3%	+2.5%	+2.0%	+2.7%	+2.5%	+2.9%	+2.8%		
Since Start of the Season												
Change ¢	+64	+120	+115	+67	+18	-6	-3	+26	+58	+112		
Change %	+2.3%	+4.8%	+4.9%	+3.2%	+0.9%	-0.3%	-0.2%	+1.8%	+4.3%	+8.9%		
Since Week 31 Last Year												
Change ¢	+499	+515	+469	+412	+322	+232	+160	+147	+153	+188		
Change %	+21.6%	+24.2%	+23.7%	+23.1%	+19.6%	+15.2%	+11.1%	+11.1%	+12.3%	+15.9%		

Sale-to-Sale Changes in Other Average AWEX Price Guides						
Micron	25.0	26.0	28.0	30.0	32.0	MC
Since Last Sale						
Change ¢	+22	+26	+17	+12	+23	+34
Change %	+2.4%	+3.5%	+4.0%	+3.3%	+9.2%	+3.6%
Since Start of the Season						
Change ¢		-45	-56	-31	+8	+10
Change %		-5.5%	-11.3%	-7.6%	+3.0%	+1.0%
Since Week 31 Last Year						
Change ¢		-23	-97	-39	-12	+53
Change %		-2.9%	-18.1%	-9.4%	-4.2%	+5.7%

MC Average Merino Cardings Price Guide

## AWIS WOOL MARKET REVIEW

Week Ending 4 February 2022 (Week 31)

The following tables show the details of this week's sale offering; the expected offerings over the next three sales; the changes in Exchange Rates since the previous sale; and highlights from the November ABS export data.

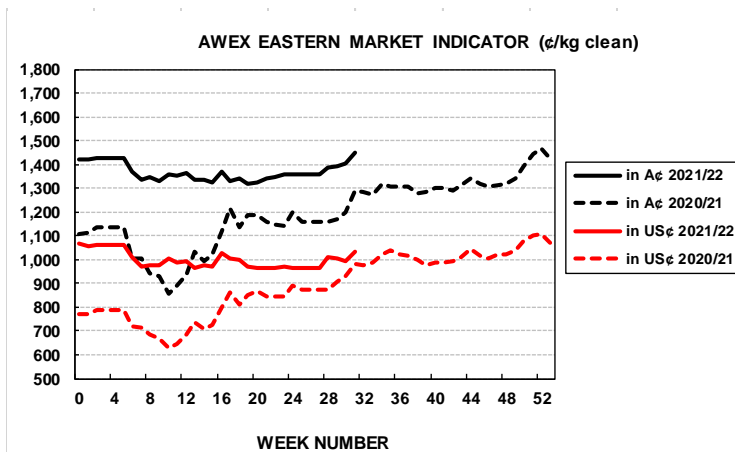
Details of this Week's Offering and the Comparison with the Previous Sale's Offering						
Centre	Last Sale	This Sale				
	Offering	Offering	Passed-In	Withdrawn Before Sale	Re- Offered	Bales Sold
North	10,569	9,101	4.0%	1.0%	10.9%	8,741
South	20,916	21,724	7.5%	2.6%	10.6%	20,085
West	12,613	9,778	7.7%	4.2%	8.1%	9,022
<b>Australia</b>	<b>44,098</b>	<b>40,603</b>	<b>6.8%</b>	<b>2.7%</b>	<b>10.0%</b>	<b>37,848</b>

Progressive Changes from Last Year		
All Bales		1 <sup>st</sup> Time Bales
Bales	%	%
+58,129	+25.2%	+23.1%
+72,051	+16.4%	+16.0%
+12,155	+7.3%	+8.0%
<b>+141,931</b>	<b>+16.9%</b>	<b>+16.4%</b>

Next Sale Offerings and Year-on-Year Differences				
Centre	Week 32	Week 33	Week 34	Differences
North	13,313	10,760	11,330	-5.5%
South	22,679	24,256	20,230	-9.0%
West	12,282	9,200	9,200	+9.4%
<b>New Zealand</b>			1,300	
<b>Australia</b>	<b>48,274</b>	<b>44,216</b>	<b>40,760</b>	<b>133,250</b>
<b>Differences</b>	<b>+7.0%</b>	<b>-11.2%</b>	<b>-8.1%</b>	<b>-4.4%</b>

Exchange Rates (Reserve Bank)	Last Sale	Day-to-Day Changes					Sale-to-Sale Change	Closing Value	Season Min & Max	
		Fri	Mon	Tues	Wed	Thur			Min	Max
United States	70.82	-0.54	-0.17	+0.55	+0.68	No	+0.38 (+0.5%)	71.20	70.82	75.26
Euro	63.10	-0.07	-0.22	+0.03	+0.43	Sale	-0.07 (-0.1%)	63.03	61.70	64.86

Country	% Share of Australia's Wool Exports by Weight of Wool Shipped			Year-on-Year % Change	
	November 2021	July to November 2021/22	July to November 2020/21	By Weight	By Value
China	76.7%	81.4%	87.6%	+34.8%	+75.5%
Italy	5.4%	4.8%	1.5%	+354.7%	+538.9%
India	6.8%	4.4%	2.8%	+124.8%	+191.8%
Czech Republic	5.9%	4.4%	4.1%	+56.6%	+92.1%
Korea	0.8%	1.5%	1.8%	+20.8%	+33.1%
Egypt	0.8%	0.7%	0.3%	+243.6%	+375.8%
Thailand	0.8%	0.6%	0.4%	+104.1%	+215.1%
Uruguay	0.4%	0.4%	0.1%	+455.7%	+872.8%
<b>Change all Countries</b>				<b>+45.1%</b>	<b>+91.6%</b>



AVERAGE EMI	
This Year	1362
Last Year	1199
2019/20	1448
2018/19	1939
2017/18	1739

SEASON AVERAGES		
Region	This Year	Diff
North	1447	+182
South	1306	+149
West	1403	+167

THIS YEAR'S EMI	
This Week	1449
First Week	1420
Low (12/01)	1319
High (13/01)	1449

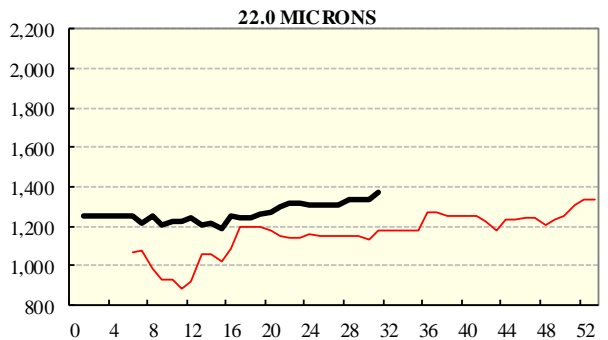
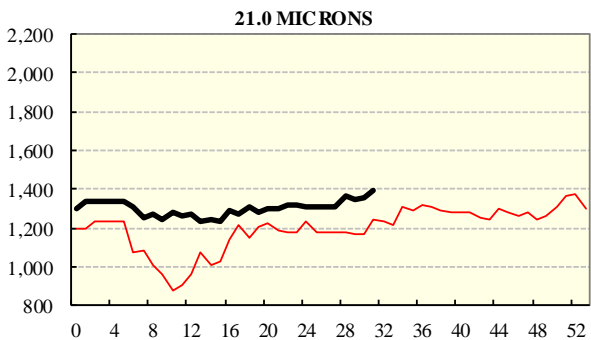
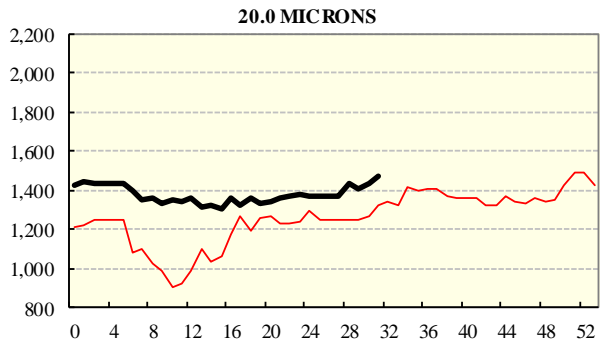
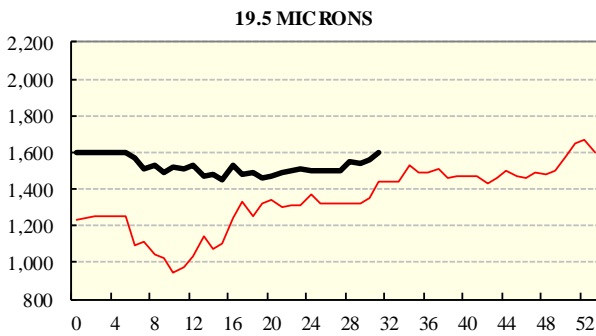
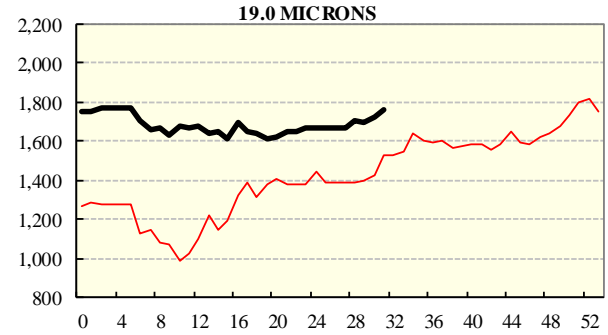
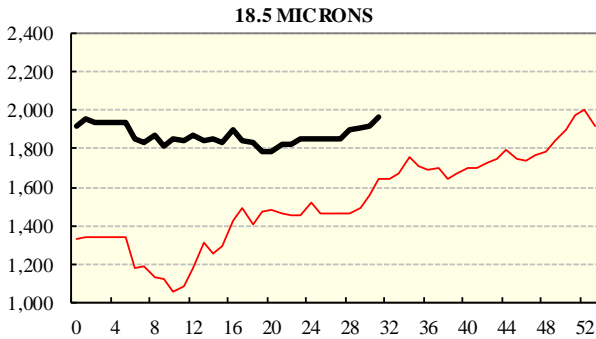
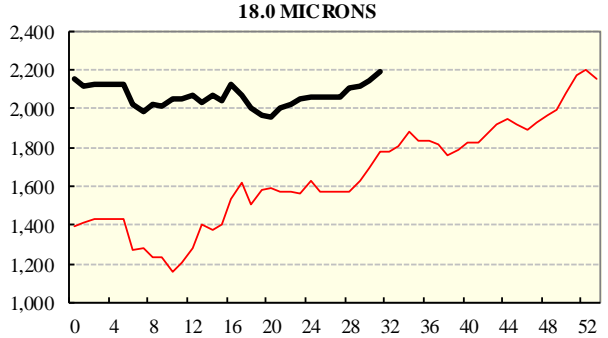
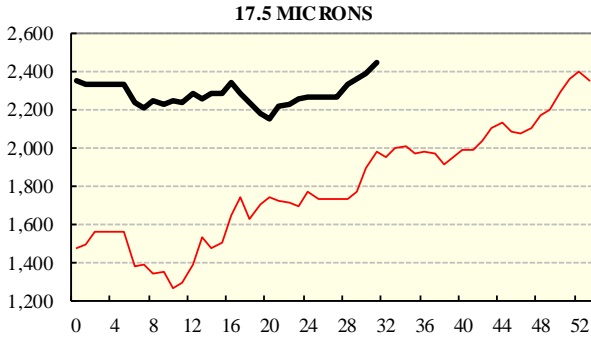
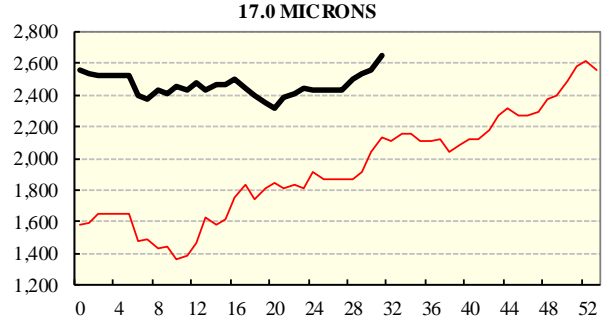
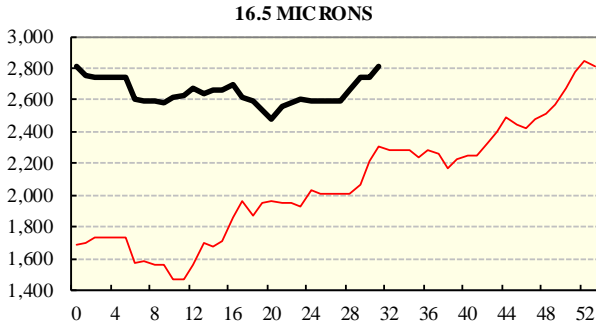
COMPARED WITH WKS 1/2		
Region	This Week	Diff
North	1543	+27
South	1387	+21
West	1492	+40

BALES OFFERED	
This Year	979,604
Last Year	837,673
Difference	+141,931
% Diff	+16.9%
FIRST OFFERED BALES	
Difference	+16.4%
% of Offering	90.7%

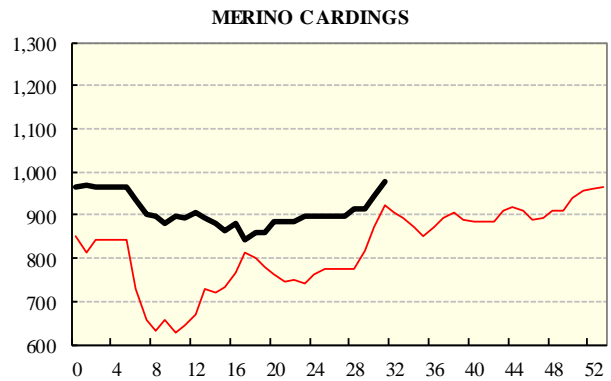
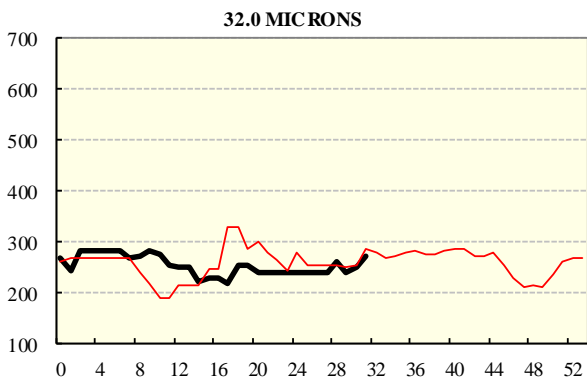
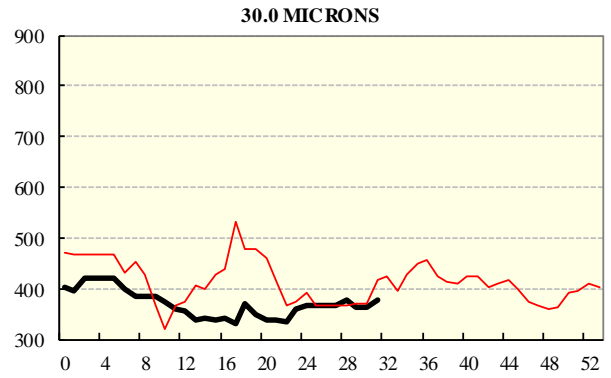
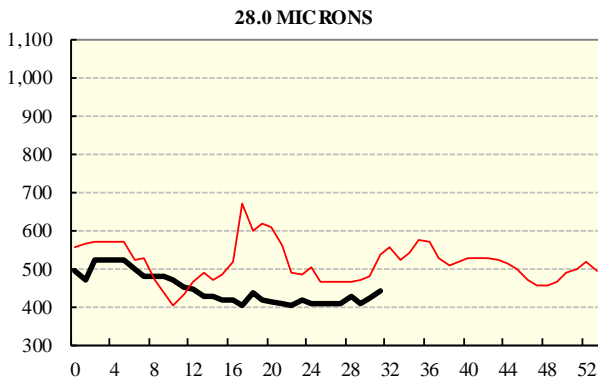
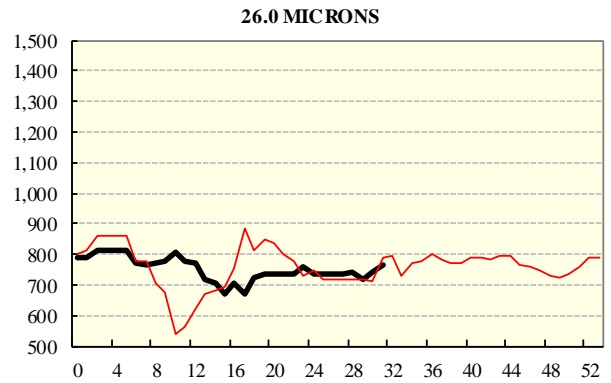
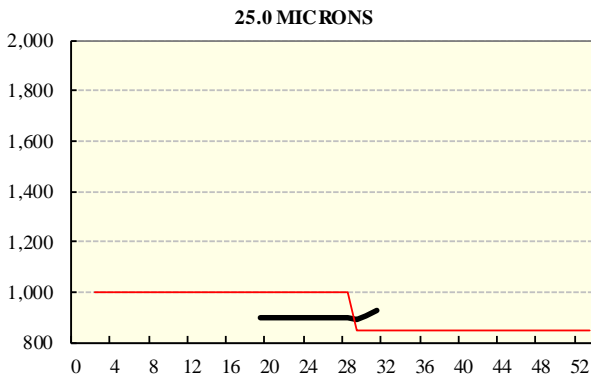
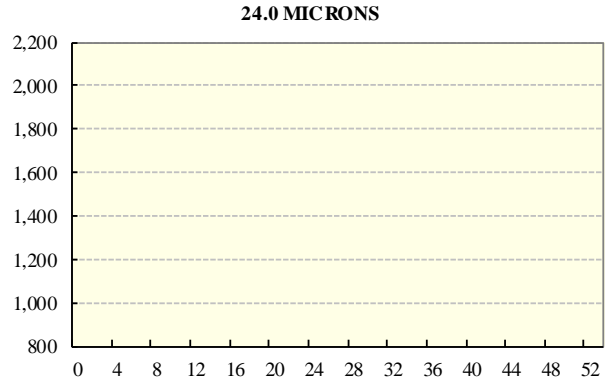
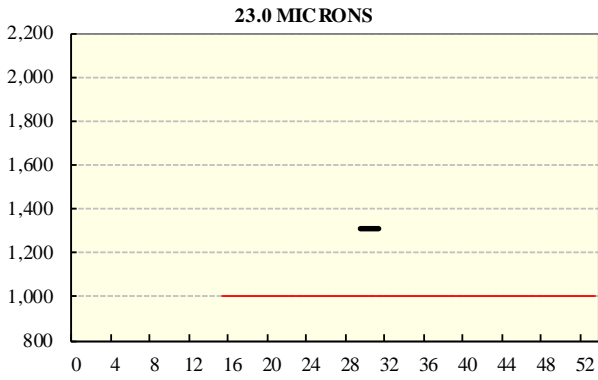
REGION BALES		
This Sale:		Diff
North	9,101	
South	21,724	
West	9,778	
Progressive Totals:		Diff
North	289,118	+25.2%
South	512,552	+16.4%
West	177,934	+7.3%

## AVERAGE AWEX MICRON PRICE GUIDES

2021/22 ( black graph line) and 2020/21 (red graph line)



**AVERAGE AWEX MICRON PRICE GUIDES**  
2021/22 ( black graph line) and 2020/21 (red graph line)



### EASTERN MARKET INDICATOR (EMI) SINCE 1999/00 (¢/kg clean)

(In Australian, United States and European Currencies)

