

AUSTRALIAN WOOL INDUSTRIES SECRETARIAT INC

Unit 9, 42 - 46 Vella Drive
Sunshine West Vic 3020
Australia
Tel: 03 9311 0103
Fax: 03 9311 0138



Email: awis@woolindustries.org
Web: www.woolindustries.org
ABN: 30 454 304 967
Reg No: A0041776E

AWIS WOOL MARKET REVIEW Week Ending 2 June 2023 (Week 48)

The AWEX EMI finished at 1209¢, 5¢ lower (-0.4%) in Australian currency and 16¢ lower (-2.0%) in US currency at sales in Sydney, Melbourne and Fremantle in Week 48 after last week's fall of 49¢. 40,106 bales were on offer nationally, compared with 39,039 bales last sale. 11.7% of the offering was passed in after 11.7% of the potential offering was withdrawn prior to sale. 35,417 bales were sold. AWEX reports that the value of the wool sold was \$51.3 million (\$1,448 per bale), taking the season total to \$2.275 billion (\$1,530 per bale). The number of bales sold at auction this season is now 0.1% greater than in 2021/22. Day-to-Day and Sale-to-Sale Changes in AWEX Regional Indicators (Week 48)

Centre	Last Sale		Day-to-Day Changes (Week43)			Sale-to-Sale Change	Closing Indicator	Sale-to-Sale Changes	
	Week	Indicator	Tuesday	Wednesday	Thursday			US ¢	Euro ¢
Eastern	47	1214	-7	+2	No Sale	-5 (-0.4%)	1209	-16	-9
Northern	47	1273	-7	+4	No Sale	-3 (-0.2%)	1270	-15	-8
Southern	47	1174	-7	+2	No Sale	-5 (-0.4%)	1169	-16	-8
Western	47	1337	+8	+21	No Sale	+29 (+2.2%)	1366	+5	+11

It was a steadier market and a more positive mood than was experienced in the previous week.

Although the EMI was down on Tuesday there were general upward movements on Wednesday across most micron ranges and wool types. These movements were greatest in the West, where the market indicators had also risen on Tuesday as well as Wednesday.

The US Exchange Rate finished 1.03¢ (-1.6%) lower to close at 64.95¢ on Wednesday.

Buyers for China were dominant.

In other countries, the South African Cape Wools Indicator was up by 2.0% since last week against a 2.8% appreciation of the Rand against the US Dollar.

Looking ahead, offerings for the coming three sales are expected to range from 30,273 bales to 37,790 bales and to be 2.8% more than in the same period last year. The forecast progressive difference to Week 51 is 6.3%.

Differences in AWEX MPGs	18.5 and 22.0	18.0 and 22.0	17.5 and 22.0	17.0 and 22.0	16.5 and 22.0
North	No 22.0µ MPG	No 22.0µ MPG	No 22.0µ MPG	No 22.0µ MPG	No 22.0µ MPG
South	305¢	463¢	641¢	783¢	947¢

Market Indicators	Week 48	Changes From			
		Four Sales Ago Week 44	Start of the Season	Week 48 Last Year	Season Average to Week 48 Last Year
Eastern Market Indicator	1209	-101 (-7.7%)	-189 (-13.5%)	-205 (-14.5%)	-70 (-5.1%)
Western Market Indicator	1366	-113 (-7.6%)	-114 (-7.7%)	-124 (-8.3%)	+22 (+1.5%)

Sale-to-Sale Changes in Average AWEX Merino Micron Price Guides (MPGs)												
Micron	16.5	17.0	17.5	18.0	18.5	19.0	19.5	20.0	21.0	22.0	23.0	24.0
Since Last Sale												
Change ¢			0	+17	+12	+13	+13	+13	+12	-24		
Change %			0.0%	+1.0%	+0.7%	+0.9%	+0.9%	+0.9%	+0.9%	-1.8%		
Since Start of the Season												
Change ¢	-663	-616	-510	-355	-249	-163	-100	-58	-68	-69		
Change %	-22.6%	-22.9%	-21.0%	-16.7%	-13.3%	-9.6%	-6.4%	-4.0%	-4.9%	-5.1%		
Since Week 48 Last Year												
Change ¢	-644	-654	-560	-428	-353	-209	-102	-23	-17	-35		
Change %	-22.1%	-24.0%	-22.6%	-19.4%	-17.9%	-12.0%	-6.5%	-1.6%	-1.3%	-2.6%		

Sale-to-Sale Changes in Other Average AWEX Price Guides							
Micron	25.0	26.0	28.0	30.0	32.0	MC	
Since Last Sale							
Change ¢			-20	-9	-4	+14	0
Change %			-3.9%	-2.8%	-1.4%	+6.4%	0.0%
Since Start of the Season							
Change ¢			-208	-95	-37	+5	-184
Change %			-29.5%	-23.6%	-11.4%	+2.2%	-20.1%
Since Week 48 Last Year							
Change ¢			-194	-90			-220
Change %			-28.1%	-22.6%			-23.1%

MC Average Merino Cardings Price Guide

AWIS WOOL MARKET REVIEW

Week Ending 2 June 2023 (Week 48)

The following tables show the details of this week's sale offering; the expected offerings over the next three sales; the changes in Exchange Rates since the previous sale; and highlights from the March ABS export data.

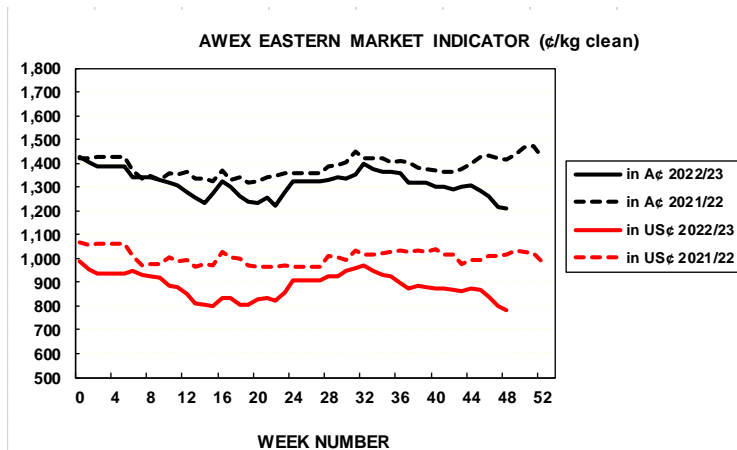
Details of this Week's Offering and the Comparison with the Previous Sale's Offering						
Centre	Last Sale	This Sale				
	Offering	Offering	Passed-In	Withdrawn Before Sale	Re- Offered	Bales Sold
North	9,723	12,056	7.3%	3.2%	5.8%	11,174
South	22,404	21,786	11.8%	10.6%	11.7%	19,210
West	6,912	6,264	19.7%	27.0%	16.8%	5,033
Australia	39,039	40,106	11.7%	11.7%	10.7%	35,417

Progressive Changes from Last Year		
All Bales		1 st Time Bales
Bales	%	%
+3,418	+0.7%	+1.3%
-402	0.0%	-0.7%
-653	-0.2%	-0.2%
+2,363	+0.1%	-0.1%

Next Sale Offerings and Year-on-Year Differences				
Centre	Week 49	Week 50	Week 51	Differences
North	12,359	9,350	9,100	-8.3%
South	23,941	22,540	21,173	+25.7%
West	No Sale	5,900	No Sale	-34.9%
New Zealand				
Australia	36,300	37,790	30,273	104,363
Differences	+16.7%	+6.2%	+1.6%	+8.2%

Exchange Rates (Reserve Bank)	Last Sale	Day-to-Day Changes					Sale-to-Sale Change	Closing Value	Season Min & Max	
		Fri	Mon	Tues	Wed	Thur			Min	Max
United States	65.98	-0.83	+0.32	-0.38	-0.14	No	-1.03 (-1.6%)	64.95	62.71	71.02
Euro	61.18	-0.50	+0.30	-0.08	-0.18	Sale	-0.46 (-0.8%)	60.72	59.92	69.45

Country	% Share of Australia's Wool Exports by Weight of Wool Shipped			Year-on-Year % Change July to March	
	March 2023	July to March 2022/23	July to March 2021/22	By Weight	By Value
China	82.7%	81.5%	81.1%	+2.3%	-2.0%
India	5.6%	6.2%	4.9%	+30.5%	+29.0%
Italy	3.9%	4.2%	4.8%	-12.2%	-4.7%
Czech Republic	2.8%	3.1%	3.9%	-20.1%	-15.7%
Korea	1.8%	1.5%	1.5%	+4.9%	-3.5%
Egypt	0.9%	0.8%	0.7%	+13.1%	+22.0%
Thailand	0.6%	0.7%	0.6%	+12.7%	+17.0%
Germany	0.1%	0.3%	0.5%	-28.1%	-24.9%
Change all Countries				+1.8%	-1.1%



AVERAGE EMI	
This Year	1308
Last Year	1385
2020/21	1199
2019/20	1448
2018/19	1939

SEASON AVERAGES		
Region	This Year	Diff
North	1384	-90
South	1257	-68
West	1446	+16

THIS YEAR'S EMI	
This Week	1209
First Week	1407
Low (10/01)	1209
High (9/01)	1407

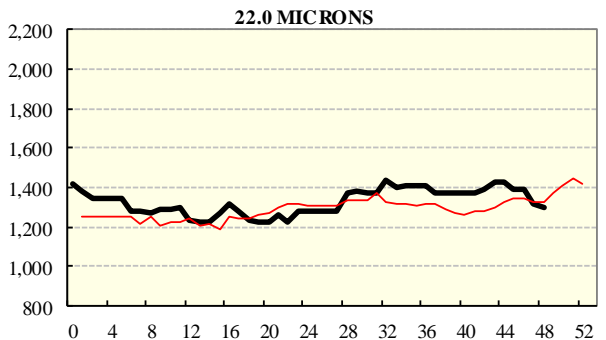
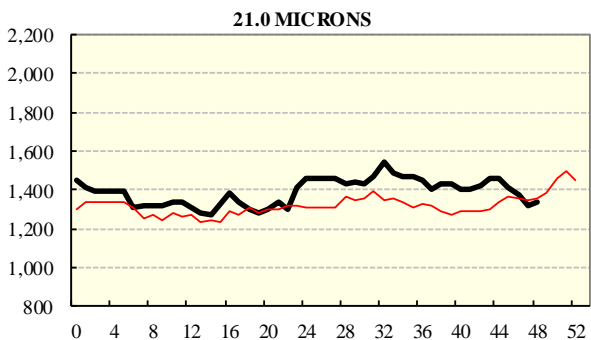
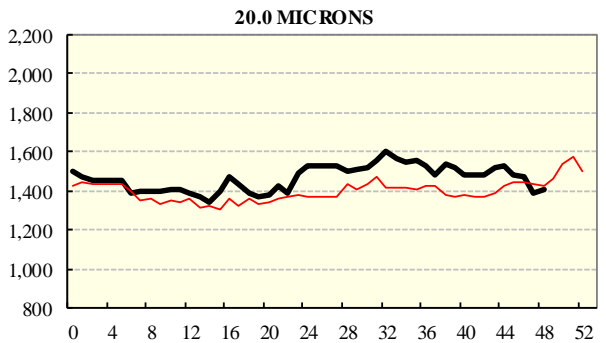
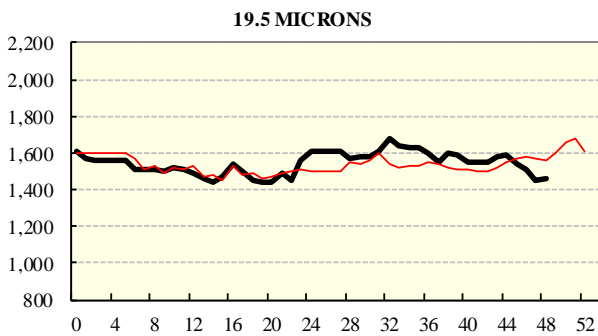
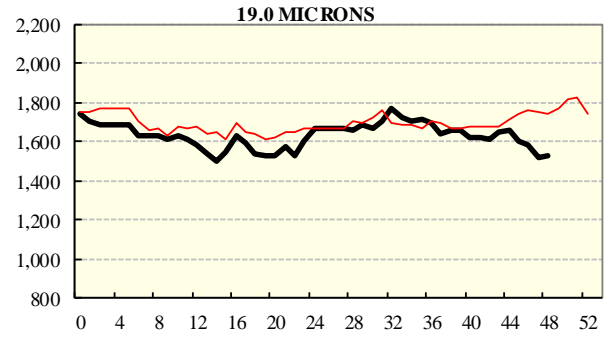
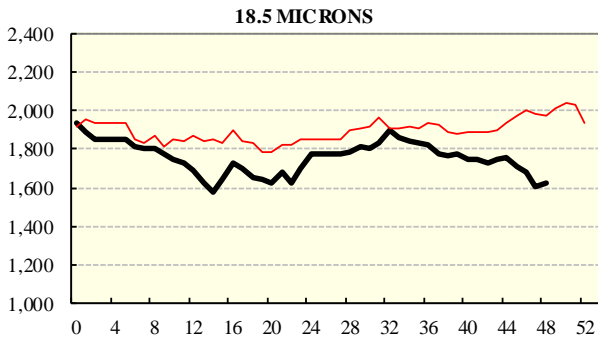
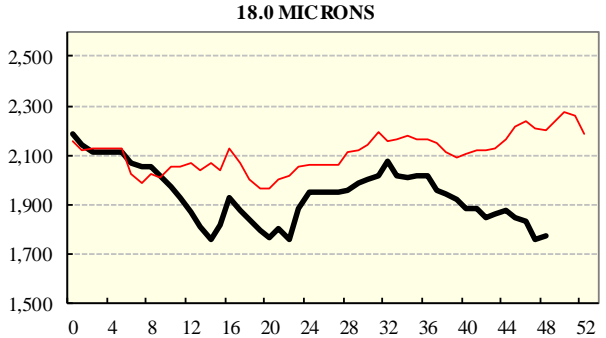
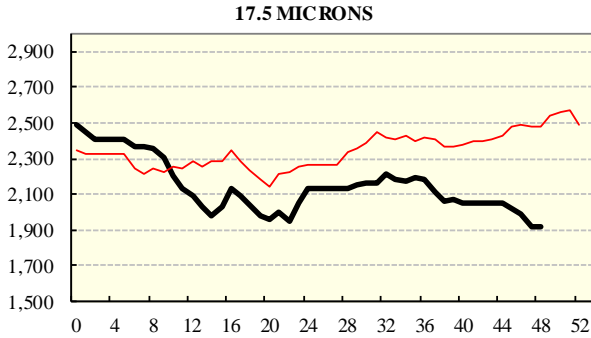
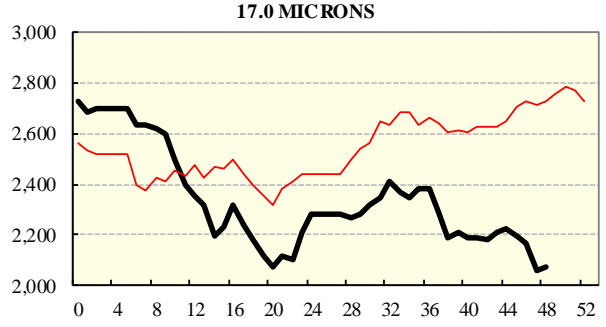
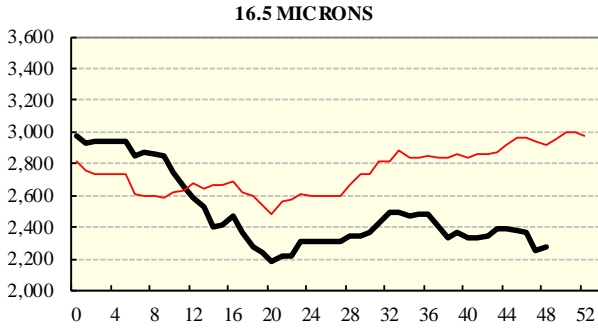
COMPARED WITH WKS 1/2		
Region	This Week	Diff
North	1270	-204
South	1169	-178
West	1366	-114

BALES OFFERED	
This Year	1,705,085
Last Year	1,702,722
Difference	+2,363
% Diff	+0.1%
FIRST OFFERED BALES	
Difference	-0.1%
% of Offering	90.8%

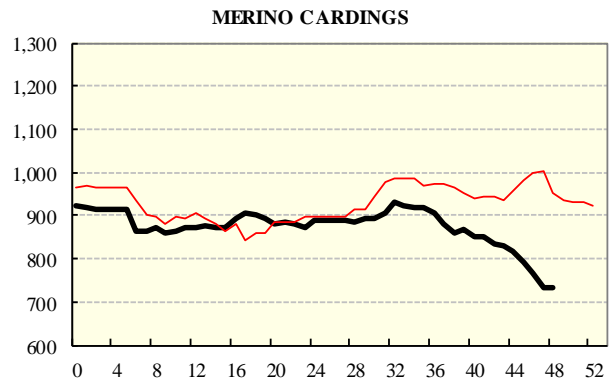
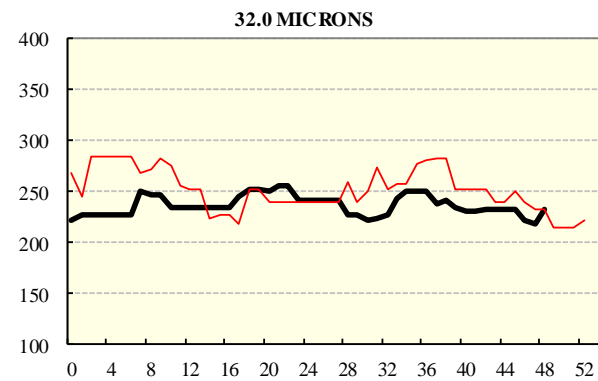
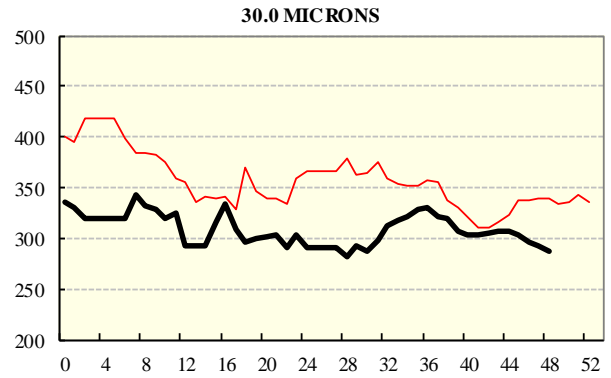
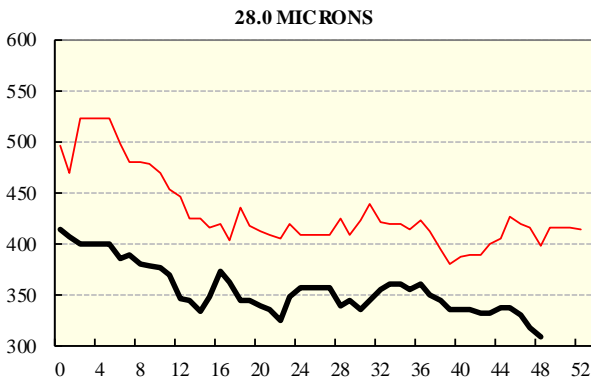
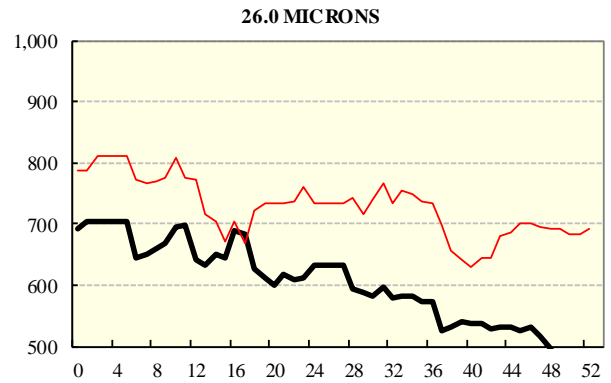
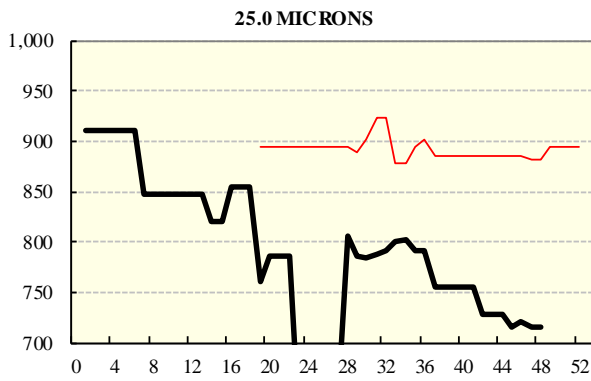
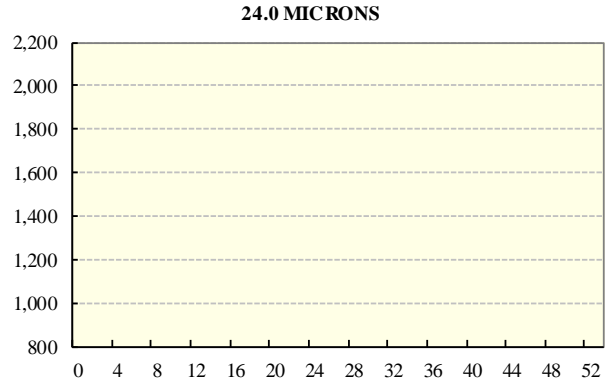
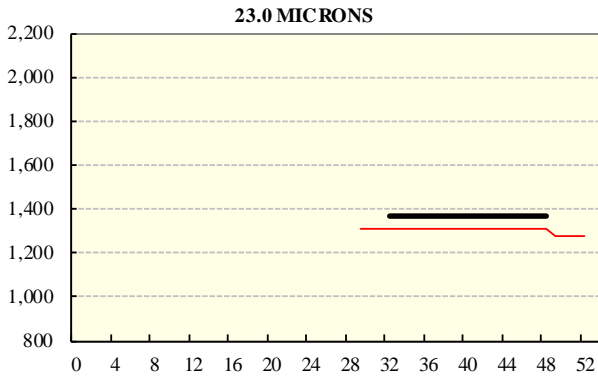
REGION BALES		
This Sale:		
Region	Bales	Diff
North	12,056	
South	21,786	
West	6,264	
Progressive Totals:		
North	481,123	+0.7%
South	896,864	0.0%
West	327,098	-0.2%

AVERAGE AWEX MICRON PRICE GUIDES

2022/23 (black graph line) and 2021/22 (red graph line)



AVERAGE AWEX MICRON PRICE GUIDES
2022/23 (black graph line) and 2021/22 (red graph line)



EASTERN MARKET INDICATOR (EMI) SINCE 1999/00 (¢/kg clean)

(In Australian, United States and European Currencies)

